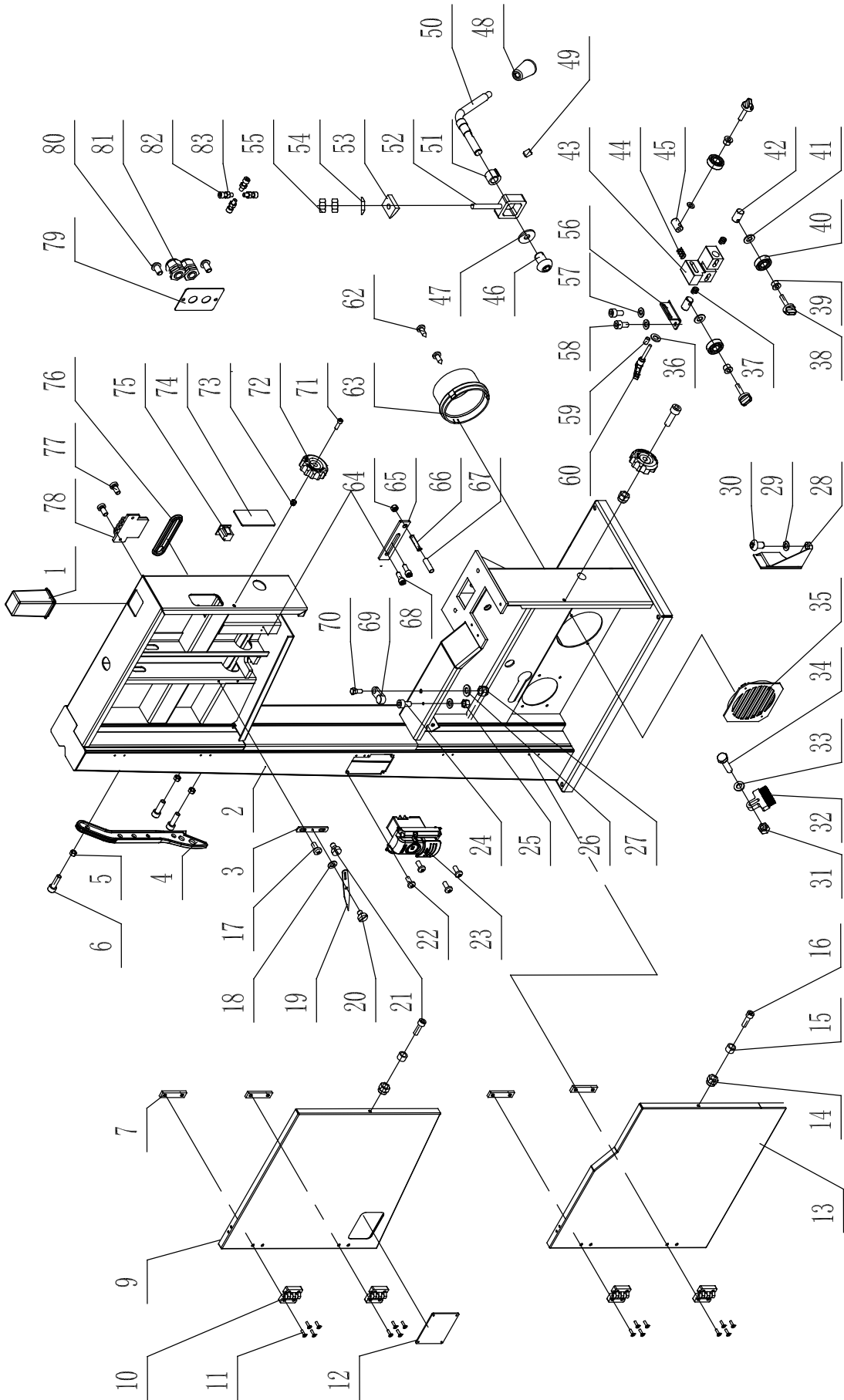


PARTS DIAGRAM

FRAME ASSEMBLY SHEET A

NOTE: Please reference the Manufacturer's Part Number when calling for Replacement Parts. For Parts under Warranty, the Serial Number of your machine is required.



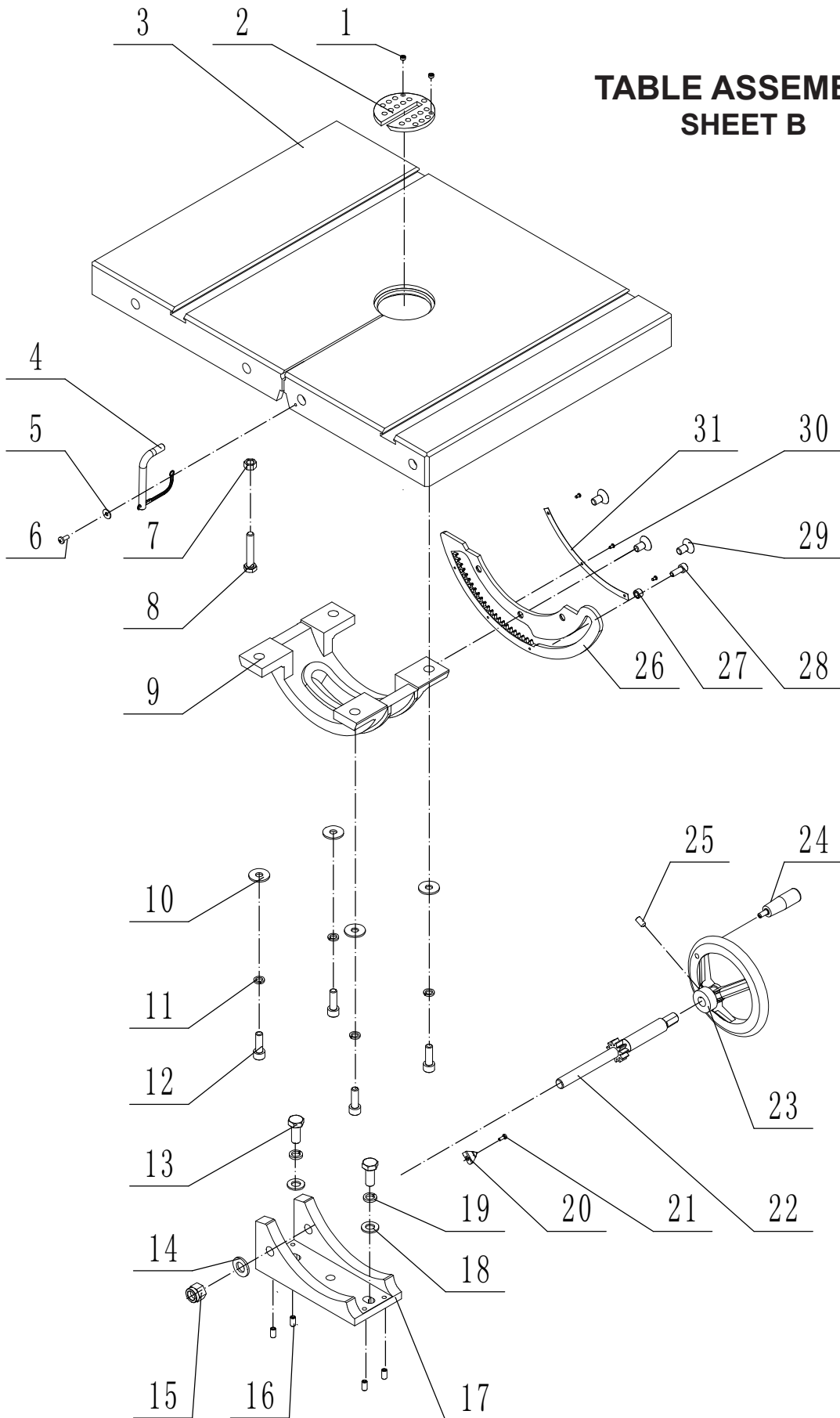
PARTS LIST

FRAME ASSEMBLY - SHEET A

KEY NO.	DESCRIPTION	PART NO.	QTY.	KEY NO.	DESCRIPTION	PART NO.	QTY.
1A	Guide post cap	1-JL28010003-001S	1	43A	Lower blade guide block	1-JMBS1401013001	1
2A	Frame	1-JMBS1401011000-117U	1	44A	Spring	1-JMBS1403014008	1
3A	Indicator adjustment plate	1-JL27010005	1	45A	Rear guide shaft	1-JMBS1403014004	1
4A	Push stick	1-JL81100003-146S	1	46A	Screw M8x12	1-M8X12GB70D2B	1
5A	Hex nut M6	1-M6GB6170B	3	47A	Big washer	1-WSH8GB96B	1
6A	Hex bolt M6x30	1-M6X30GB70D1B	3	48A	Quick release rod	1-1904011	1
7A	Threaded plate	1-JMBS1401010005	4	49A	Socket hd cap screw M8x8	1-M8X8GB80B	1
9A	Upper wheel cover	1-JMBS1404010200-076U	1	50A	Camshaft	1-JMBS1401012001	1
10A	Hinge	1-JMBS1404010400	4	51A	Cam	1-JMBS1403016004	1
11A	Hex socket screw M4x16	1-M4X16GB70D3B	16	52A	Slide bracket	1-JMBS1403016003	1
12A	Clear window	1-JL26010001	1	53A	Spacer	1-JMBS1403030004	1
13A	Lower bandwheel door	1-JMBS1401010003-076U	1	54A	Washer	1-WSH10GB849B	1
14A	Nylon nut M6-1.0	1-M6GB889Z	2	55A	Nut M10	1-M10GB6170B	2
15A	Bushing	1-JL26010007	2	56A	Connecting plate	1-JMBS1401010001-117U	1
16A	Carriage bolt M6x20	1-M6X20GB70D1Z	2	57A	Carriage bolt M5x12	1-M5X12GB70B	2
17A	Screw M5x10	1-M5X10GB818Z	1	58A	Washer	1-WSH5GB97D1B	2
18A	Washer	1-WSH5GB97D1Z	2	59A	Set screw M6x10	1-M6X10GB77B	1
19A	Pointer	1-JL27010004-114X	1	60A	Adjusting handle	1-KTSB-1-B-M6X50X10	1
20A	Special screw	1-JL26010010	1	62A	Tapping screw	1-ST3D5X9D5GB845B	2
21A	Fixed bolt	1-JL27010019	1	63A	Dust port	1-JL20010007-001S	1
22A	Pan head screw M4x10	1-M4X10GB823B	4	64A	Nut M6	1-M6GB6170Z	1
23A	On/Off switch	1-HY56-6	1	65A	Connecting plate	1-JMBS1401010004	1
24A	Screw M5x10	1-M5X10GB70Z	1	66A	Set screw M6x30	1-M6X30GB77B	1
25A	Nut M5	1-M5GB6170Z	1	67A	Plastic pipe	1-JXBS2401010018	1
26A	Washer	1-WSH8GB97D1B	1	68A	Nut M5x12	1-M5X12GB70Z	1
27A	Nylon nut M8	1-M8GB889B	1	69A	Table angle stop block	1-JL21010014	1
28A	Lower blade guard	1-JMBS1401010002-001S	1	70A	Stud shaft	1-JL26010015	1
29A	Washer	1-WSH6GB97D1B	1	71A	Carriage bolt M6x20	1-M6X20GB70D1Z	2
30A	Bolt M6x12	1-M6X12GB70D2B	1	72A	Star knob	1-JL26010006-001S	2
31A	Self-locking nut M6	1-M6GB889Z	1	73A	Nylon nut M6-1.0	1-M6GB889Z	2
32A	Brush	1-JL26010003	1	74A	Clear window	1-JMBS1404010001	1
33A	Washer	1-WSH6GB96Z	1	75A	Plug seat	1-DB-F-M	1
34A	Hex bolt M6x25	1-M6X25GB5783Z	1	76A	Rubber cover	1-JL28010005-001S	1
35A	Dust port grille	1-JL20010019-001S	1	77A	Pan head screw M5x10	1-M5X10GB818B	2
36A	Big washer	1-WSH6GB96B	1	78A	Tool holder	1-JL26090001	1
37A	Spring	1-JMBS1403014005	2	79A	Strain relief plate	1-JL26010011-117U	1
38A	Locking handle	1-JMBS1403014006-001S	3	80A	Hex socket screw M6x10	1-M6X10GB70D2B	2
39A	Upper bearing bushing	1-JMBS1403014002	3	81A	Strain relief M20	1-JL91046100	2
40A	Bearing	1-BRG6202-2RSGB276	3	82A	Hex socket screw M8x25	1-M8X25GB5783B	4
41A	Washer	1-WSH8GB96B	3	83A	Nut M8	1-M8GB6170B	4
42A	Guide shaft	1-JMBS1403014003	2				

PARTS DIAGRAM

TABLE ASSEMBLY SHEET B



PARTS LIST

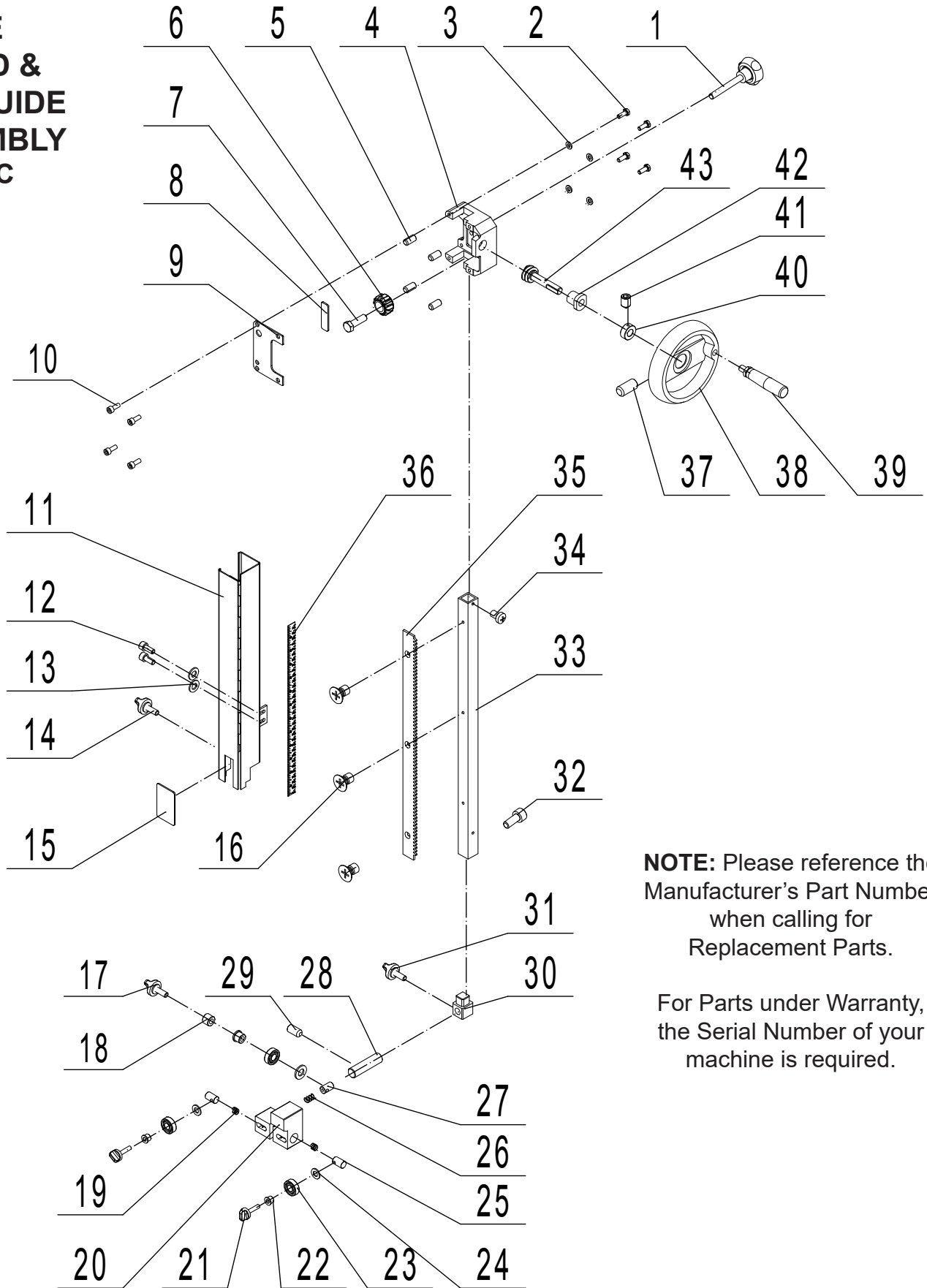
TABLE ASSEMBLY SHEET B

KEY NO.	DESCRIPTION	PART NO.	QTY.
1B	Set screw	1-M6X4GB77B	2
2B	Table insert	1-JL26050008A-001S	1
3B	Table	1-JMBS1401030001-001L	1
4B	Table alignment pin & lanyard	1-JMBS1404030002	1
5B	Washer	1-WSH4GB96Z	1
6B	Pan head screw M4x10	1-M4X10GB818Z	1
7B	Hex nut M8	1-M8GB6170Z	1
8B	Hex bolt M8x45	1-M8X45GB5783Z	1
9B	Table trunnion	1-JMBS1403030002	1
10B	Washer	1-WSH8GB96B	4
11B	Spring washer	1-WSH8GB93B	4
12B	Hex socket cap screw M8x25	1-M8X25GB70B	4
13B	Hex bolt M10x25	1-M10X25GB5783B	2
14B	Flat washer M12	1-WSH12GB97D1B	1
15B	Hex self-locking nut M12	1-M12GB889B	1
16B	Set screw M6x12	1-M6X12GB77B	4
17B	Trunnion support	1-JMBS1403030005	1
18B	Flat washer M10	1-WSH10GB97D1B	2
19B	Spring washer	1-WSH10GB93B	2
20B	Pointer	1-JXBS2401031008A	1
21B	Cross recess pan head screw M3x8	1-M3X8GB818Z	1
22B	Gear shaft	1-JMBS1403030007	1
23B	Crank handwheel	1-SGSL-D125-d12	1
24B	Small handle	1-JL26020014-001S	1
25B	Lock screw M6x12	1-M6X12GB80B	1
26B	Rack	1-JMBS1403030003	1
27B	Eccentric bushing	1-JMBS1403030008	1
28B	Screw M6x16	1-M6X16GB70B	1
29B	Hex countersunk head screw M8x16	1-M8X16GB70D3Z	3
30B	Rivet 2D5x5	1-RVT2D5X5GB827C	3
31B	Angle scale label	1-JMBS1403030006	1

NOTE: Please reference the Manufacturer's Part Number when calling for Replacement Parts. For Parts under Warranty, the Serial Number of your machine is required.

PARTS DIAGRAM

BLADE GUARD & TOP GUIDE ASSEMBLY SHEET C



NOTE: Please reference the Manufacturer's Part Number when calling for Replacement Parts.

For Parts under Warranty, the Serial Number of your machine is required.

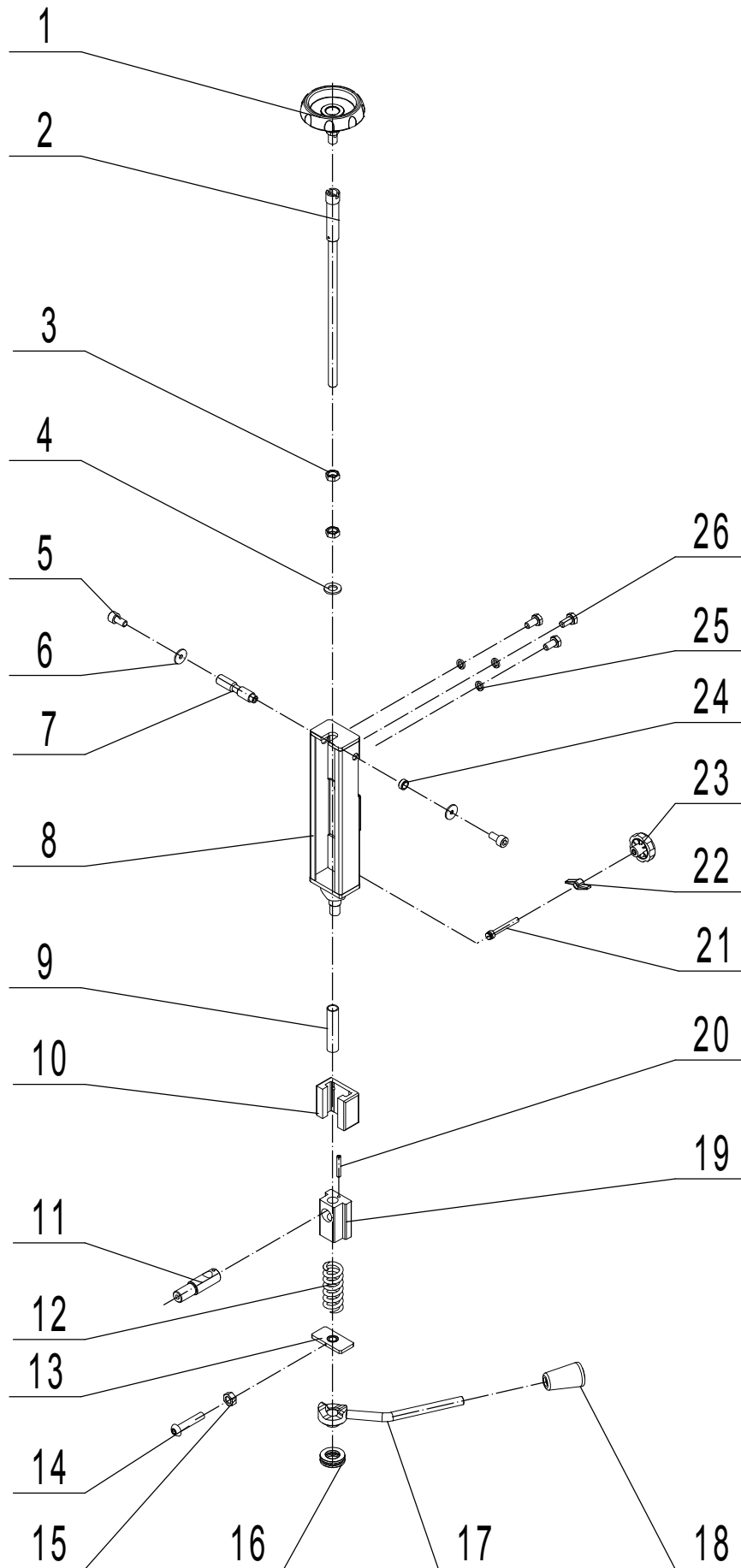
PARTS LIST

BLADE GUARD & TOP GUIDE ASSEMBLY - SHEET C

KEY NO.	DESCRIPTION	PART NO.	QTY.
1C	Locking handle	1-JL82240011-001S	1
2C	Hex bolt M6x16	1-M6X16GB5783B	4
3C	Washer	1-WSH6GB96B	4
4C	Guide bracket	1-JL27040006	1
5C	Set screw	1-M6X12GB77B	4
6C	Gear	1-1501006	1
7C	Fixed bolt	1-JL26040006	1
8C	Fixed plate	1-JL26040007	1
9C	Guide bracket cover	1-JL27040002A	1
10C	Hex socket screw M6x16	1-M6X16GB70Z	4
11C	Hinged door	1-JMBS1401052000-114X	1
12C	Carriage bolt M5x12	1-M5X12GB70B	2
13C	Washer	1-WSH5GB97D1B	2
14C	Locking handle	1-JMBS1403050004-001S	1
15C	Clear window	1-JMBS1404050001	1
16C	Hex socket screw M5x8	1-M5X8GB819B	3
17C	Long clamp handle	1-JMBS1801052002	1
18C	Fixed block	1-JMBS1403014007	1
19C	Spring	1-JMBS1403014005	2
20C	Upper guide	1-JMBS1401051001	1
21C	Lock handle	1-JMBS1403014006-001S	2
22C	Bushing	1-JMBS1403014002	3
23C	Bearing	1-BRG6202-2RSGB276	3
24C	Washer	1-WSH8GB96B	3
25C	Guide shaft	1-JMBS1403014003	2
26C	Spring	1-JMBS1403014008	1
27C	Rear guide shaft	1-JMBS1403014004	1
28C	Guide	1-JMBS1401051002	1
29C	Hex socket end lock screw M6X12	1-M6X12GB80B	1
30C	Upper guide support block	1-JMBS1401050001	1
31C	Lock ratchet handle	1-KTSB-1-B-M8X63X20	1
32C	Screw M5X25	1-M5X25GB70D1B	1
33C	Guide post	1-JMBS1401050002	1
34C	Pan head screw M5X8	1-M5X8GB818B	1
35C	Gear rack	1-1-JL28040001A	1
36C	Scale	1-JMBS1401050003	1
37C	Hex socket end lock screw M6X12	1-M6X12GB77B	1
38C	Crank handwheel	1-SGSL-D100-d10	1
39C	Handwheel handle	1-JL26020014B-001S	1
40C	Set collar	1-JL20010015	1
41C	Set screw	1-M5X8GB71B	1
42C	Bushing	1-JL27040003	1
43C	Worm cylinder	1-JL27040004	1

PARTS DIAGRAM

BLADE TENSION & TRACKING ASSEMBLY SHEET D



PARTS LIST

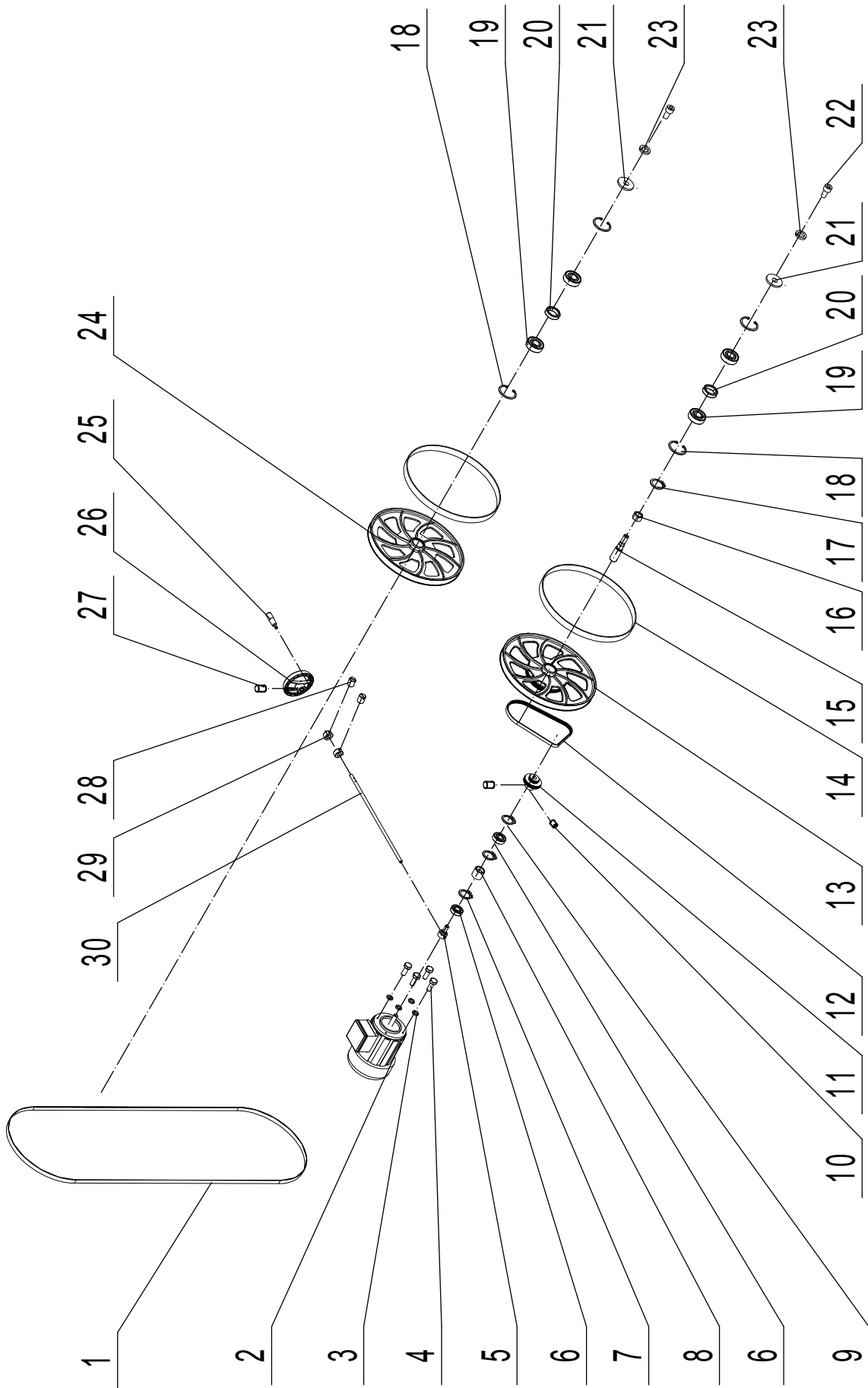
BLADE TENSION & TRACKING ASSEMBLY - SHEET D

KEY NO.	DESCRIPTION	PART NO.	QTY.
1D	Blade tension handwheel	1-JL21025000A001S	1
2D	Blade tension rod	1-JL28032000A	1
3D	Special hex nut	1-JL28030003	2
4D	Washer	1-WSH12GB97D1Z	1
5D	Hex socket screw M6x12	1-M6X12GB70D1Z	2
6D	Washer	1-WSH6GB5287Z	2
7D	Upper shaft	1-JL28030008	1
8D	Slide bracket	1-JL28031000	1
9D	Tube	1-JL28030001	1
10D	Sliding rail	1-JL28030010	1
11D	Upper wheel shaft	1-JL28030004	1
12D	Spring	1-JL27030011A	1
13D	Block	1-JMBS1404040001	1
14D	Hex socket screw M3x16	1-M3X16GB70D2B	1
15D	Hex nut M3	1-M3GB6170B	1
16D	Thrust bearing	1-BRG51104GB301	1
17D	Quick release handle	1-JL28033000	1
18D	Quick release knob	1-1904011	1
19D	Upper wheel shaft hinge	1-JL28030007	1
20D	Pin roll 5x35	1-PIN5X35GB879D1B	1
21D	Quick stop bolt	1-JL28030005	1
22D	Wing nut	1-JL20010016A-001S	1
23D	Blade tracking handle	1-JL26040015A-001S	1
24D	Washer	1-JL28030009	1
25D	Spring washer	1-WSH6GB93B	3
26D	Hex bolt M6X12	1-M6X12GB5781B	3

NOTE: Please reference the Manufacturer's Part Number when calling for Replacement Parts.
For Parts under Warranty, the Serial Number of your machine is required.

PARTS DIAGRAM

MOTOR & WHEEL ASSEMBLY SHEET E



PARTS LIST

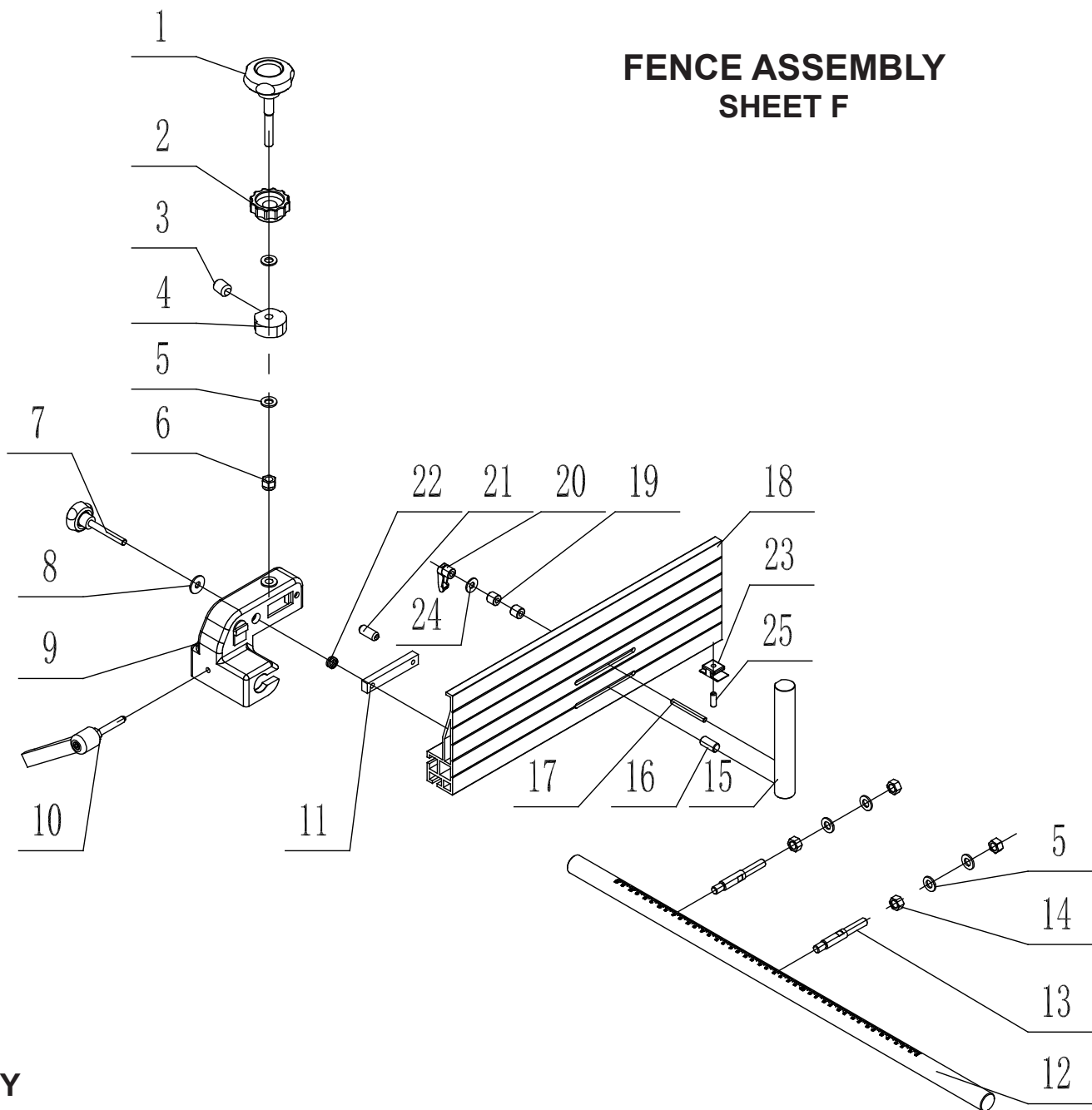
KEY NO.	DESCRIPTION	PART NO.	QTY.
1E	Blade	1-JL28020001C	1
2E	Motor	2-YLH906134	1
3E	Spring Washer	1-WSH6GB93Z	4
4E	Hex. Bolt M6x16	1-M6X16GB5783Z	4
5E	Sliding shaft	1-JL20014001	1
6E	Bearing	1-BRG6001-2RSGB276	2
7E	Retainer ring	1-CLP28GB893D1B	2
8E	Tension wheel	1-JL20014002A	1
9E	Retaining spring	1-CLP12GB894D1B	1
10E	Hex socket screw M6x8	1-M6X8GB80B	2
11E	Motor pulley	1-JL20070001	1
12E	Multi-vee belt	1-JL20020002	1
13E	Lower bandwheel	1-JL28023001-001L	1
14E	Tire	1-JL21022002B	2
15E	Lower bandwheel shaft	1-JL28020002A	1
16E	Nut	1-JL20020004	1
17E	Retaining ring 17	1-CLP17GB894D1B	1
18E	Retaining ring 40	1-CLP40GB893D1B	4
19E	Bearing	1-BRG6203-2RSGB276	4
20E	Tube	1-JL28020004	2
21E	Washer	1-WSH8GB5287Z	2
22E	Hex screw M8x16	1-M8X16GB70Z	2
23E	Spring washer	1-WSH8GB93Z	2
24E	Upper bandwheel	1-JL28022001-001L	1
25E	Handwheel handle	1-JL26020014B-001S	1
26E	Crank handwheel	1-SGSL-D100-d10	1
27E	Set screw M6x8	1-M6X8GB77B	1
28E	Set screw M5x8	1-M5X8GB71Z	2
29E	Set collar	1-CLP10GB884Z	2
30E	Crank	1-JL28020003A	1

NOTE: Please reference the Manufacturer's Part Number when calling for Replacement Parts.

For Parts under Warranty, the Serial Number of your machine is required.

PARTS DIAGRAM

FENCE ASSEMBLY SHEET F



KEY

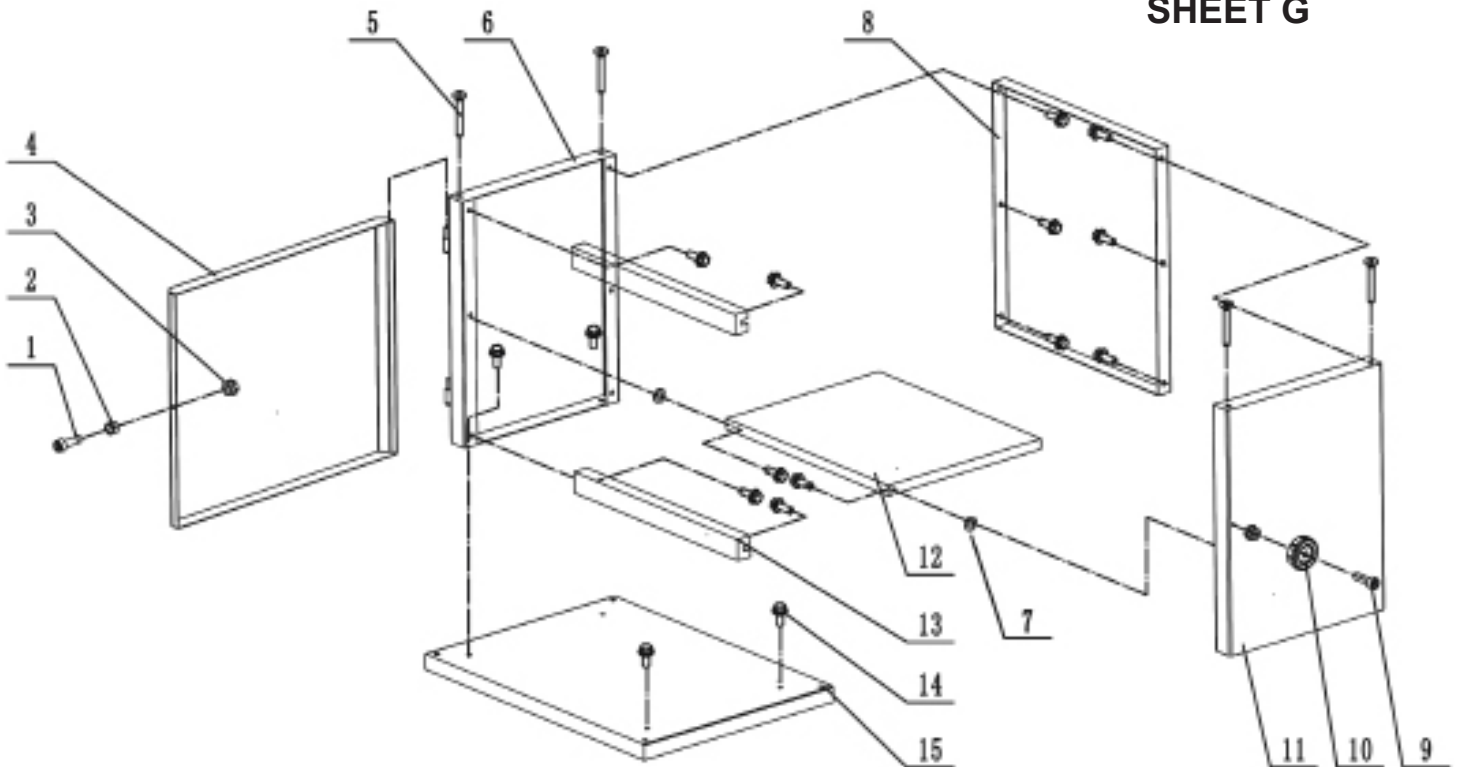
NO.	DESCRIPTION	PART NO.	QTY.
1F	Adjusting handle	1-JMBS1403060009-001S	1
2F	Locking knob	1-JMBS1403060010-001S	1
3F	Cap screw M8X10	1-M8X10GB80B	1
4F	Cam	1-JMBS1403060004	1
5F	Flat washer	1-WSH10GB97D1Z	6
6F	Nut M10	1-M10GB889Z	1
7F	Handle	1-JMBS1403060003-001S	1
8F	Big washer	1-WSH8GB96Z	1
9F	Rip fence carrier	1-JMBS1403060001-076U	1
10F	Locking handle	1-JMBS1403060011	1
11F	Sliding block	1-JMBS1403060005	1
12F	Front guide rail	1-JMBS1403060006	1
13F	Connecting rod	1-JXBS2001060003	2
14F	Hex nut M10	1-M10GB6170Z	4

KEY

NO.	DESCRIPTION	PART NO.	QTY.
15F	Re-saw bar	1-JMBS1403061001	1
16F	Screw	1-JL26061003	1
17F	Bolt	1-JMBS1403061002	1
18F	Rip fence	1-JMBS1403060002	1
19F	Tube	1-JL93010018	2
20F	Locking handle	1-KTBS-1-A-M6X50	1
21F	Roll pin	1-PIN6X26GB879B	1
22F	Spring	1-JMBS1403060007	1
23F	Nylon plate	1-JMBS1401060001	1
24F	Washer	1-WSH6GB97D1B	1
25F	Set screw	1-M6X16GB77B	1

PARTS LIST

CABINET ASSEMBLY SHEET G



KEY NO.	DESCRIPTION	QTY.	PART NO.
1G	Screw M6X16	1	1-M6X16GB70Z
2G	Bushing	1	1-JL20010001A
3G	Self-locking nut M6	2	1-M6GB889Z
4G	Door assembly	1	1-JL28051000-076U
5G	Countersunk hex socket screw M6X50	4	1-M6X50GB70D3Z
6G	Left side panel	1	1-JL28050002A-076U
7G	Big washer	2	1-WSH8GB96Z
8G	Back side panel	1	1-JL28050001A-076U
9G	Hex socket cap screw M6X20	1	1-M6X20GB70D1Z
10G	Handle	1	1-JL26010006-001S
11G	Right side panel	1	1-JL28050006A-076U
12G	Shelf	1	1-JL28050004-076U
13G	Beam	2	1-JL28050003A-076U
14G	Hex bolt with flange M8X20	16	1-M8X20GB5789Z
15G	Base board	1	1-JL28050005B-076U

NOTE: Please reference the Manufacturer's Part Number when calling for Replacement Parts. For Parts under Warranty, the Serial Number of your machine is required.