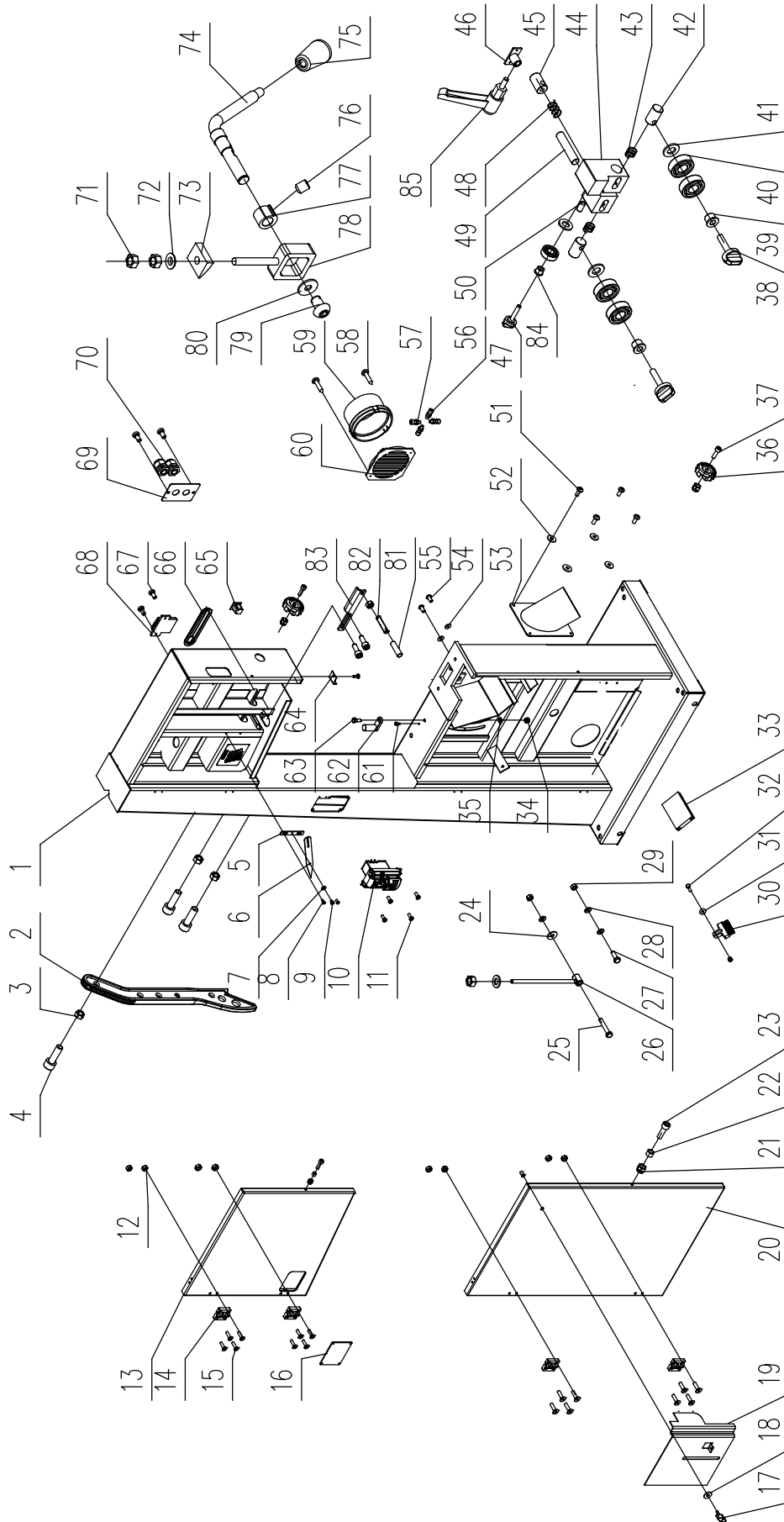


**NOTE:** Please reference the Manufacturer's Part Number when calling for Replacement Parts. For Parts under Warranty, the Serial Number of your machine is required.

# FRAME ASSEMBLY SHEET A



# PARTS LIST

## FRAME ASSEMBLY - SHEET A

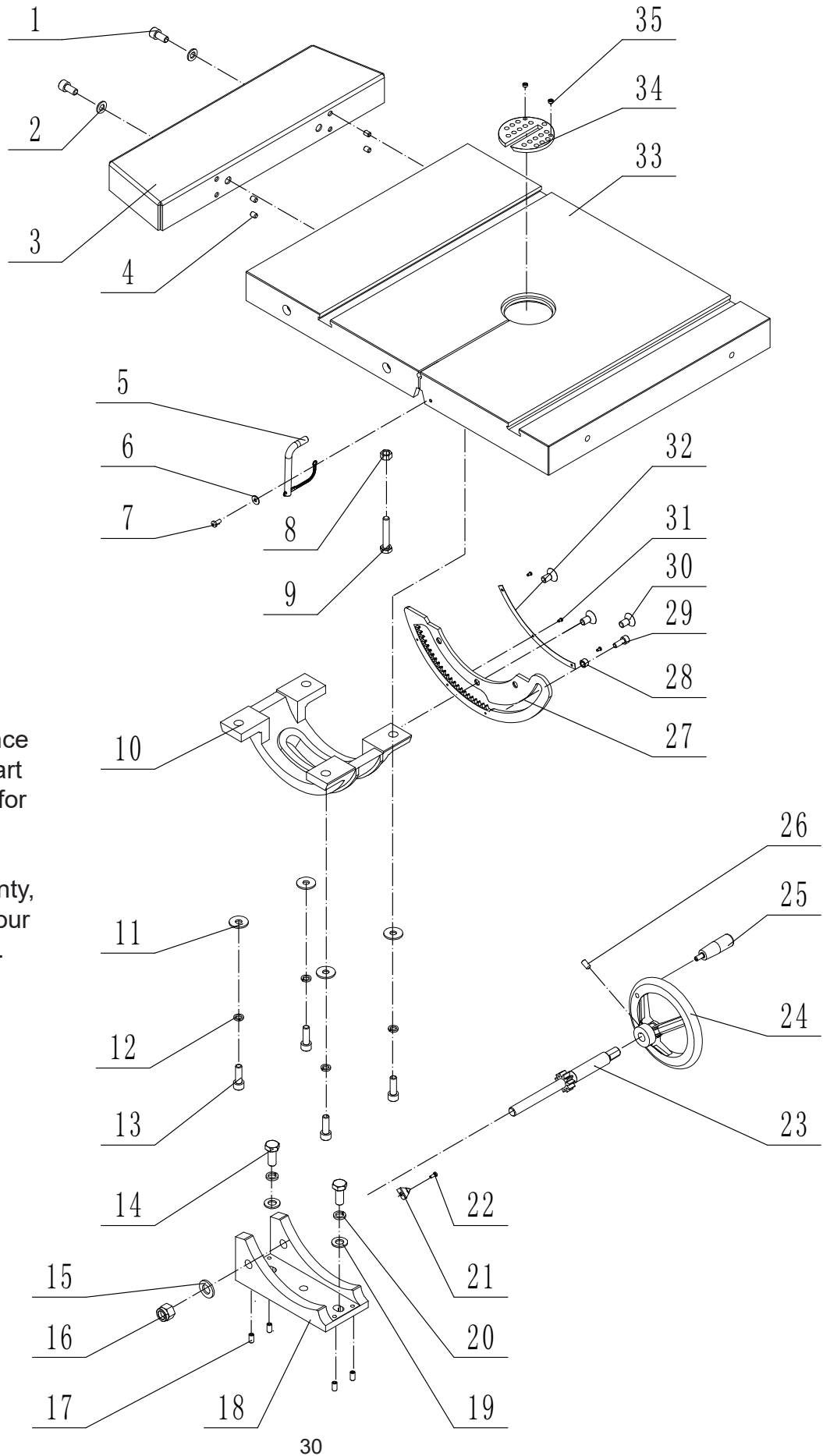
KEY NO.	DESCRIPTION	QTY	PART NO.	KEY NO.	DESCRIPTION	QTY	PART NO.
1A	Frame	1	1-JMBS1801011000A-117U	43A	Spring	2	1-JMBS1403014005
2A	Push stick	1	1-JL81100003-146S	44A	Lower guide block	1	1-JMBS1801052001
3A	Hex nut M6	3	1-M6GB6170B	45A	Adjust bar	1	1-JMBS1801016001
4A	Hex bolt	3	1-M6X30GB70D1B	46A	Guide frame	1	1-JMBS1801010001
5A	Batter board	1	1-JL27010005	47A	Locking handle	1	1-JMBS1403014006-001S
6A	Tension indicator arrow	1	1-JL26010004-002A	48A	Spring	1	1-JMBS1401014008
7A	Flat washer	1	1-WSH5GB97D1Z	49A	Guide supporting rod	1	1-JL26041004
8A	Pan head screw M5x10	2	1-M5X10GB818Z	50A	Cap screw M8x10	1	1-M8X10GB80B
9A	Special screw	1	1-JL26010010	51A	Pan head screw M4x10	4	1-M4X10GB818B
10A	Safety On/Off switch	1	1-HY56-6	52A	Big washer	4	1-WSH4GB96B
11A	Pan head screw M4x10	4	1-M4X10GB823B	53A	Dust port	1	1-JXBS2401010013
12A	Hex nut with flange	8	1-M6GB6177B	54A	Big washer	2	1-WSH6GB96B
13A	Upper door cover	1	1-JMBS1801012000A-076U	55A	Screw M6x12	2	1-M6X12GB70D2B
14A	Plastic hinge	4	1-EBBS1801010004	56A	Hex bolt M12x40	4	1-M12X40GB5783B
15A	Hex cap screw M6x20	16	1-M6X20GB70D3B	57A	Hex nut M12	4	1-M12GB6170B
16A	Window	1	1-JXBS1804010004A	58A	Tapping screw	2	1-ST3D5X9D5GB845B
17A	Wing nut	1	1-JXBS2401054001-001S	59A	Dust port	1	1-JL20010007-001S
18A	Big washer	1	1-WSH6GB96B	60A	Dust port grating	1	1-JL20010019-001S
19A	Protective cover	1	1-JXBS1804012004-114X	61A	Hex cap screw M5x12	3	1-M5X12GB70D1B
20A	Lower door cover	1	1-JMBS1801013000A-076U	62A	Heel stop block	1	1-FDBS2001014001
21A	Hex locking nut M6	5	1-M6GB889Z	63A	Stud shaft	1	1-JL26010015
22A	Cover	2	1-JL26010007	64A	Scale pointer	1	1-JMBS1403011026-076U
23A	Hex cap screw M6x20	2	1-M6X20GB70D1Z	65A	Electric socket	1	1-DB-F-M
24A	Big washer	1	1-WSH10GB96Z	66A	Dust board	1	1-JL26030019
25A	Hex bolt M10x60	1	1-M10X60GB5783Z	67A	Pan head screw M5x10	4	1-M5X10GB818B
26A	Pull rod	1	1-JMBS1801014001	68A	Tool holder	1	1-JL26090001
27A	Hex bolt M10x30	1	1-M10X30GB5783Z	69A	Threading board	1	1-JL26010011-117U
28A	Flat washer	3	1-WSH10GB97D1Z	70A	Strain relief M20	2	1-JL91046100B
29A	Hex nut M10	3	1-M10GB6170Z	71A	Hex nut M10	2	1-M10GB6170B
30A	Brush	1	1-JL21060003	72A	Washer	1	1-WSH10GB849B
31A	Big washer	3	1-WSH6GB96Z	73A	Heel block	1	1-JMBS1403030004
32A	Hex bolt M6x25	1	1-M6X25GB5783Z	74A	Camshaft handle	1	1-JMBS1801015001
33A	Board	1	1-JXBS1804010002	75A	Knob ball	1	1-1904011
34A	Hex locking nut M8	1	1-M8GB889Z	76A	Hex cap screw M8x8	1	1-M8X8GB80B
35A	Flat washer	1	1-WSH8GB97D1Z	77A	Cam	1	1-JMBS1403016004
36A	Star knob	2	1-JL26010006-001S	78A	Tension	1	1-JMBS1403016003
37A	Hex cap screw M6x25	2	1-M6X25GB70D1Z	79A	Hex cap screw M8x12	1	1-M8X12GB70D2B
38A	Lock handle	2	1-JMBS1801052002-001S	80A	Big washer	1	1-WSH8GB96B
39A	Bearing sleeve	2	1-JMBS1801052003	81A	Plastic tubing	1	1-JXBS2401010018
40A	Bearing	5	1-BRG6202-2RSG276	82A	Set screw M6x30	1	1-M6X30GB77B
41A	Washer	3	1-WSH8GB96B	83A	Upper blade guard	1	1-JMBS1801010006
42A	Guide shaft	2	1-JMBS1403014003	84A	Bearing Sleeve	1	1-JMBS1403014002
				85A	Ratchet handle	1	1-KTSB-1-B-M8X63X20

# PARTS DIAGRAM

## TABLE ASSEMBLY SHEET B

**NOTE:** Please reference the Manufacturer's Part Number when calling for Replacement Parts.

For Parts under Warranty, the serial number of your machine is required.



# PARTS LIST

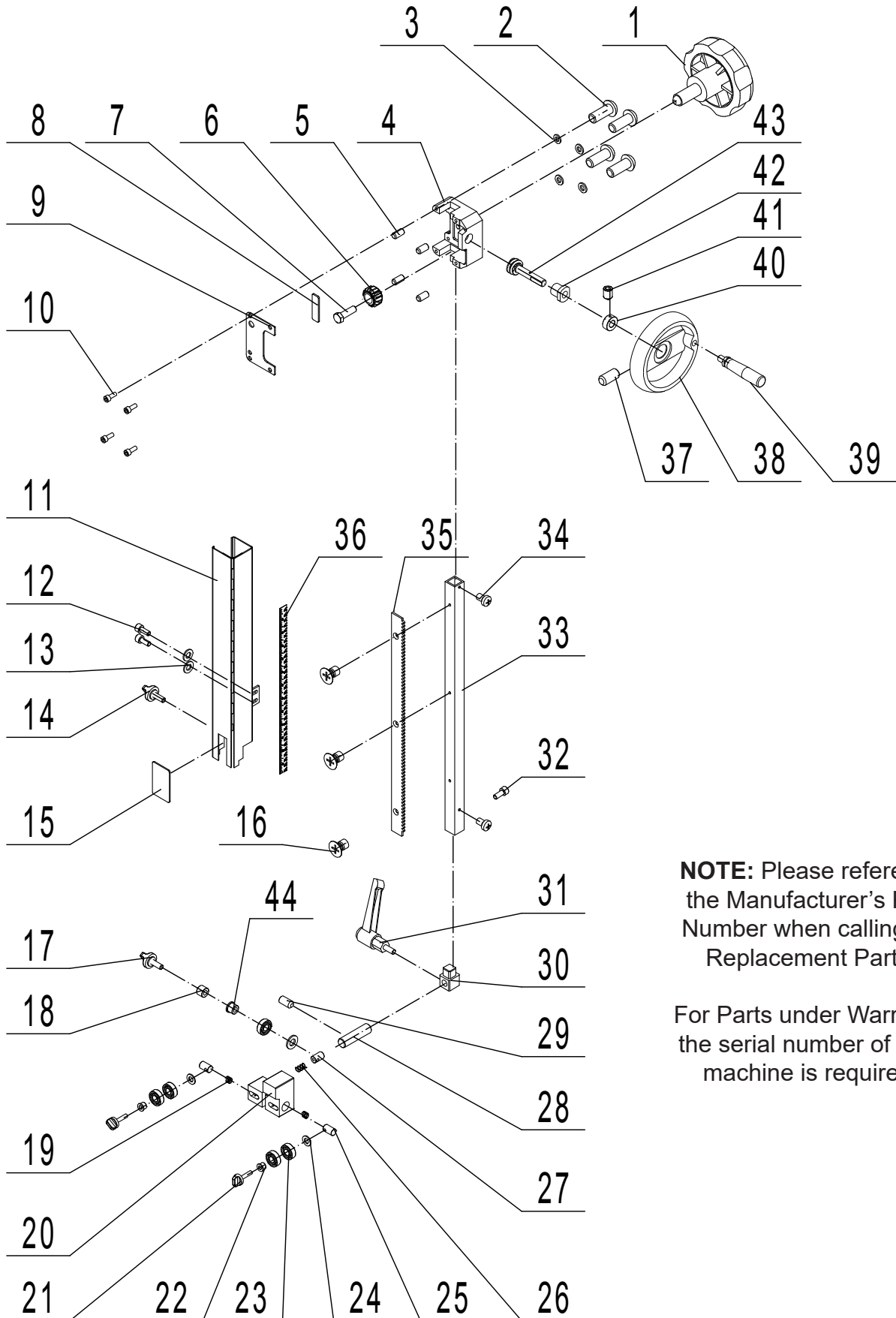
## TABLE ASSEMBLY - SHEET B

KEY NO.	DESCRIPTION	QTY	MFG. PART NO.
1B	Hex socket cap screw M8x16	2	1-M8X16GB70D1Z
2B	Flat washer M8	2	1-WSH8GB97D1Z
3B	Extension table	1	1-JMBS1801030002-076U
4B	Set screw M6x8	4	1-M6X8GB77B
5B	Table support pin assembly	1	1-JMBS1404030002
6B	Big washer	1	1-WSH4GB96Z
7B	Cross recess pan head screw M4x10	1	1-M4X10GB818Z
8B	Nut M8	1	1-M8GB6170B
9B	Hex bolt M8x50	1	1-M8X50GB5781B
10B	Lower table trunnion	1	1-JMBS1403030002
11B	Big washer	4	1-WSH8GB96B
12B	Spring washer	4	1-WSH8GB93B
13B	Hex socket cap screw M8x25	4	1-M8X25GB70D1B
14B	Hex bolt M10x25	2	1-M10X25GB5783B
15B	Flat washer M12	1	1-WSH12GB97D1B
16B	Hex locking nut	1	1-M12GB889B
17B	Set screw M6x12	4	1-M6X12GB77B
18B	Support bracket	1	1-JMBS1403030005
19B	Flat washer	2	1-WSH10GB97D1B
20B	Spring washer	2	1-WSH10GB93B
21B	Table angle pointer	1	1-JXBS2401031008A
22B	Cross recess pan head screw M3x8	1	1-M3X8GB818Z
23B	Gear shaft	1	1-JMBS1403030007A
24B	Handle	1	1-SGSL-D125-d12
25B	Small handle	1	1-JL26020014-001S
26B	Set Screw M6x12	1	1-M6X12GB80B
27B	Rack	1	1-JMBS1403030003
28B	Eccentric bushing	1	1-JMBS1403030008
29B	Screw M6x16	1	1-M6X16GB70D1B
30B	Hex countersunk head screw M8x16	3	1-M8X16GB70D3Z
31B	Rivet	3	1-RVT2D5X5GB827C
32B	Angle scale label	1	1-JMBS1403030006
33B	Table	1	1-JMBS1801030001A-001L
34B	Table insert	1	1-JL26050008A-001S
35B	Set screw M6x4	2	1-M6X4GB77B

# PARTS DIAGRAM

## GUIDE POST ASSEMBLY

### SHEET C



**NOTE:** Please reference the Manufacturer's Part Number when calling for Replacement Parts.

For Parts under Warranty, the serial number of your machine is required.

# PARTS LIST

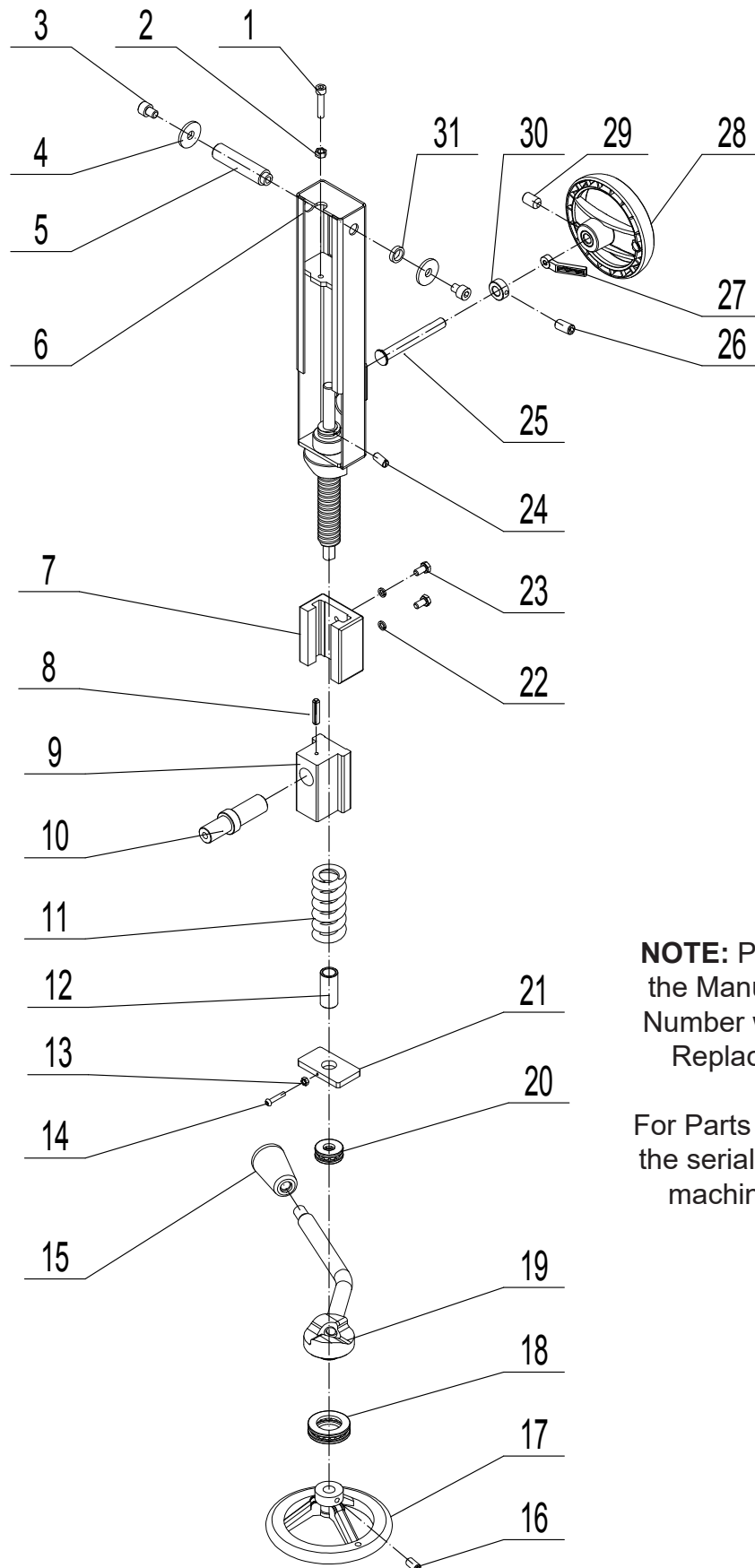
## GUIDE POST ASSEMBLY - SHEET C

KEY NO.	DESCRIPTION	QTY	MFG. PART NO.
1C	Lock handle	1	1-JL26040015-001S
2C	Hex bolt M8x20	4	1-M8X20GB70D2B
3C	Big washer	4	1-WSH8GB96B
4C	Guide bracket	1	1-JL26040008
5C	Set screw M6x12	4	1-M6X12GB77B
6C	Gear	1	1-1501006
7C	Fixed bolt	1	1-JL26040006
8C	Fixed plate	1	1-JL26040007
9C	Guide bracket cover	1	1-BS5001050001
10C	Hex bolt	4	1-M8X16GB70D1B
11C	Hinged door	1	1-JMBS1801051000B-114X
12C	Hex socket cap screw M5x12	2	1-M5X12GB70D1B
13C	Washer	2	1-WSH5GB97D1B
14C	Lock handle	1	1-JMBS1403050004-001S
15C	Clear window	1	1-JMBS1404050001
16C	Screw M4x10	3	1-M4X10GB819B
17C	Lock handle	1	1-JMBS1801052002-001S
18C	Heel block	1	1-JMBS1403014007
19C	Spring	2	1-JMBS1403014005
20C	Upper guide	1	1-JMBS1801052001
21C	Lock handle	2	1-JMBS1801052002-001S
22C	Bearing sleeve	2	1-JMBS1801052003
23C	Bearing	5	1-BRG6202-2RSGB276
24C	Flat washer	3	1-WSH8GB96B
25C	Guide shaft	2	1-JMBS1403014003
26C	Spring	1	1-JMBS1403014008
27C	Adjust bar	1	1-JMBS1801052004
28C	Guide supporting rod	1	1-JL26041004
29C	Locking screw M6x12	1	1-M8X10GB77B
30C	Upper guide support block	1	1-BS5001052001
31C	Ratchet handle	1	1-KTSB-1-B-M8X63X25
32C	Hex socket cap screw M6x30	1	1-M6X30GB70D1B
33C	Slider bar	1	1-BS5001050003
34C	Pan head screw M5x10	2	1-M5X10GB818B
35C	Rack	1	1-BS6001050001
36C	Scale	1	1-JMBS1403050002
37C	Locking screw M6x12	1	1-M6X12GB77B
38C	Crank handwheel	1	1-SGSL-D100-d12
39C	Small handle	1	1-JL26020014B-001S
40C	Set screw collar	1	1-CLP12GB884B
41C	Set screw M5x8	1	1-M5X8GB78B
42C	Bushing	1	1-JL26040003
43C	Worm cylinder	1	1-JL26040004
44C	Bearing sleeve	1	1-JMBS1403014002

# PARTS DIAGRAM

## BLADE TENSION & TRACKING

### SHEET D



**NOTE:** Please reference the Manufacturer's Part Number when calling for Replacement Parts.

For Parts under Warranty, the serial number of your machine is required.

# PARTS LIST

## BLADE TENSION & TRACKING SHEET D

KEY NO.	DESCRIPTION	QTY	MFG. PART NO.
1D	Hex socket cap screw M6x30	1	1-M6X30GB70D1Z
2D	Hex nut M6	1	1-M6GB6170Z
3D	Hex socket cap screw M8x10	2	1-M8X10GB70Z
4D	Washer	2	1-WSH8GB5287Z
5D	Supporting roller	1	1-JL26030001A
6D	Blade tension bracket assembly	1	1-JL26031000B
7D	Sliding Rail	1	1-JL26030013
8D	Roll pin	1	1-PIN5X35GB879D1B
9D	Upper wheel shaft hinge	1	1-JL26030009A
10D	Upper wheel shaft	1	1-JMBS1801040001
11D	Spring	1	1-JL26030011
12D	Spring bushing	1	1-JL26030002
13D	Hex nut	1	1-M3GB6170B
14D	Screw M3x16	1	1-M3X16GB70D2B
15D	Knob ball	1	1-1904011
16D	Set screw M6x12	1	1-M6X12GB80B
17D	Large tension handwheel	1	1-SGSL-D125-D12
18D	Bearing	1	1-BRG51105GB301
19D	Tension lever with riser block	1	1-JL26030018
20D	Bearing	1	1-BRG51201GB301
21D	Layer board	1	1-JMBS1403040007
22D	Washer	2	1-WSH6GB93Z
23D	Hexagon bolt M6x12	2	1-M6X12GB5783Z
24D	Set screw M5x12	1	1-M5X12GB73B
25D	Stud shaft	1	1-JL26030020
26D	Set screw M5x10	1	1-M5X10GB77B
27D	Locking handle	1	1-JL26030016-001S
28D	Top wheel tilt handwheel	1	1-SGSL-D100-d10
29D	Set screw M6x10	1	1-M6X10GB80B
30D	Retainer ring	1	1-JL26030021
31D	Support sleeve	1	1-JL26030017A

**NOTE:** Please reference the Manufacturer's Part Number when calling for Replacement Parts.  
For Parts under Warranty, the serial number of your machine is required.

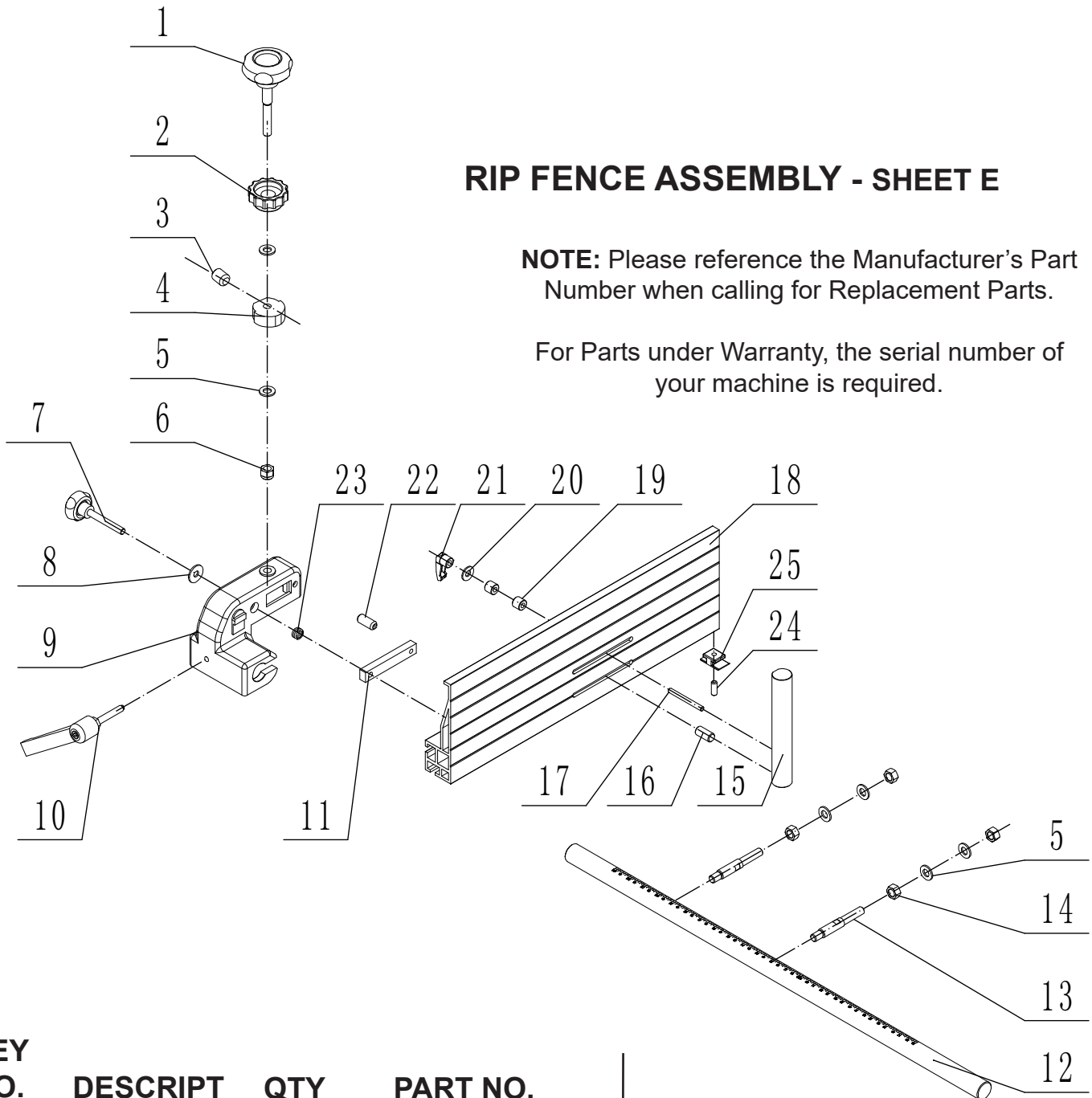


# PARTS DIAGRAM & PARTS LIST

## RIP FENCE ASSEMBLY - SHEET E

**NOTE:** Please reference the Manufacturer's Part Number when calling for Replacement Parts.

For Parts under Warranty, the serial number of your machine is required.



### KEY

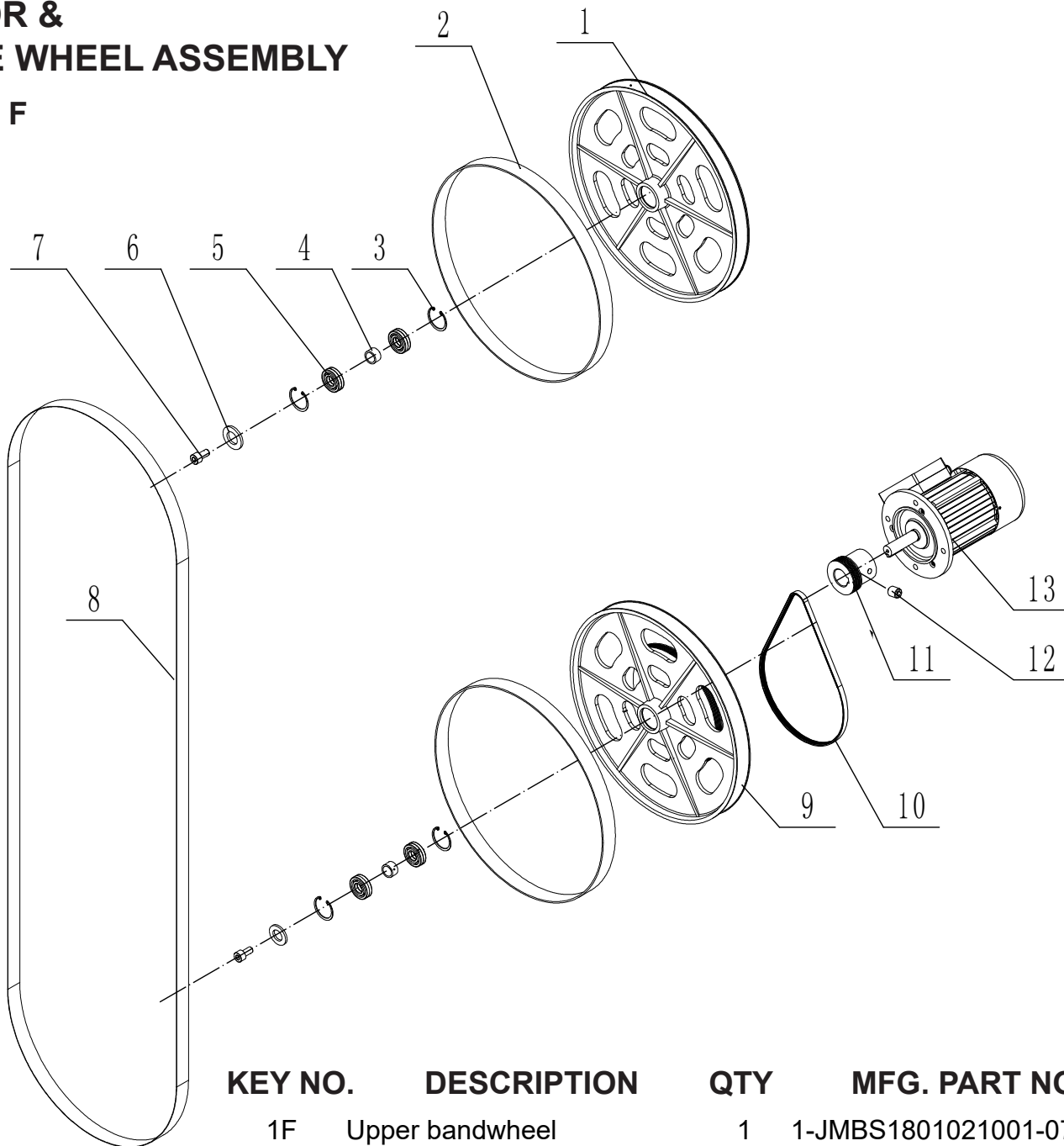
NO.	DESCRIPT	QTY	PART NO.
1E	Adjust handle	1	1-JMBS1403060009-001S
2E	Drift locking handle	1	1-JMBS1403060010-001S
3E	Cap screw M8x10	1	1-M8X10GB80B
4E	Cam	1	1-JMBS1403060004
5E	Flat washer	6	1-WSH10GB97D1Z
6E	Hex locking nut M10	1	1-M10GB889D1Z
7E	Fence locking handle	1	1-JMBS1403060003-001S
8E	Big washer	1	1-WSH8GB96Z
9E	Fence carrier	1	1-JMBS1403060001-076U
10E	Carrier locking handle	1	1-JMBS1403060011
11E	Sliding block	1	1-JMBS1403060005
12E	Guide rail	1	1-JMBS1801060004
13E	Connecting rod	2	1-JXBS2001060003
14E	Hex nut	4	1-M10GB6170Z

### KEY

NO.	DESCR	QTY	PART NO.
15E	Re-saw bar	1	1-JMBS1403061001
16E	Screw	1	1-JL26061003
17E	Bolt	1	1-JMBS1403061002
18E	Fence	1	1-JMBS1403060002
19E	Spacer	2	1-JL93010018
20E	Washer	1	1-WSH6GB97D1B
21E	Lock knob	1	1-KTSB-1-A-M6X50
22E	Roll pin	1	1-PIN6X26GB879D1B
23E	Spring	1	1-JMBS1403060007
24E	Set screw	1	1-M6X16GB77B
25E	Nylon plate	1	1-JMBS1401060001

# PARTS DIAGRAM & PARTS LIST

## MOTOR & DRIVE WHEEL ASSEMBLY SHEET F



KEY NO.	DESCRIPTION	QTY	MFG. PART NO.
1F	Upper bandwheel	1	1-JMBS1801021001-076Z
2F	Tire	2	1-JXBS1804021002
3F	Circlip ring	4	1-CLP47GB893D1B
4F	Spacer bushing	2	1-JL26030008
5F	Bearing	4	1-BRG6204-2RSGB276
6F	Washer	2	1-JXPS1202070005
7F	Hex screw M8x16	2	1-M8X16GB70D1Z
8F	Bandsaw blade	1	1-JMBS1801020002
9F	Lower bandwheel	1	1-JMBS1801022001-076Z
10F	Multi-vee belt	1	1-5PJ1023GB16588
11F	Motor pulley	1	1-JMBS1801020004A
12F	Socket head cap screw M8X8	2	1-M8X8GB80B
13F	Motor	1	2-YYH903154A

**NOTE:** Please reference the Manufacturer's Part Number when calling for Replacement Parts.

For Parts under Warranty, the serial number of your machine is required.