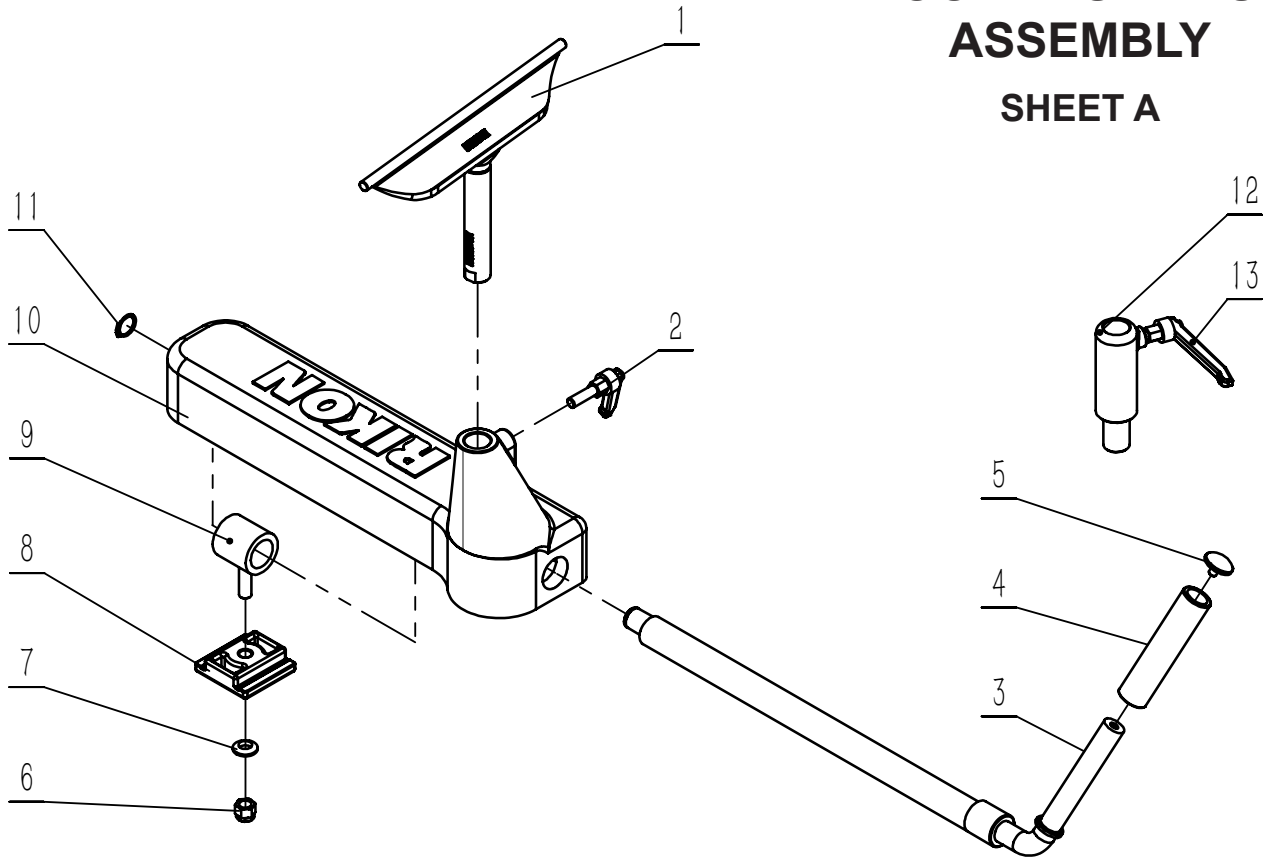


PARTS DIAGRAM & PARTS LIST

TOOL REST BASE ASSEMBLY

SHEET A



KEY NO.	DESCRIPTION	PART NO.	QUANTITY
1A	12" Tool rest assembly (see Page 30)	70-978, 70-970, 70-966	1ea
2A	Locking handle	P70-3040-2A	1
3A	Handle	P70-3040-3A	1
4A	Sleeve	P70-3040-4A	1
5A	End cap	P70-3040-5A	1
6A	Hexagon lock nut M12	P70-3040-6A	1
7A	Washer 12	P70-3040-7A	1
8A	Position plate	P70-3040-8A	1
9A	Drawbar	P70-3040-9A	1
10A	Tool rest base	P70-3040-10A	1
11A	Retaining ring	P70-3040-11A	1
12A	Tool Rest Height Extension	P70-3040-12A	1
13A	Handle	P70-3040-13A	1

NOTE: Please reference the Manufacturer's Part Number when calling for Replacement Parts. For Parts under Warranty, the Serial Number of your machine is required.

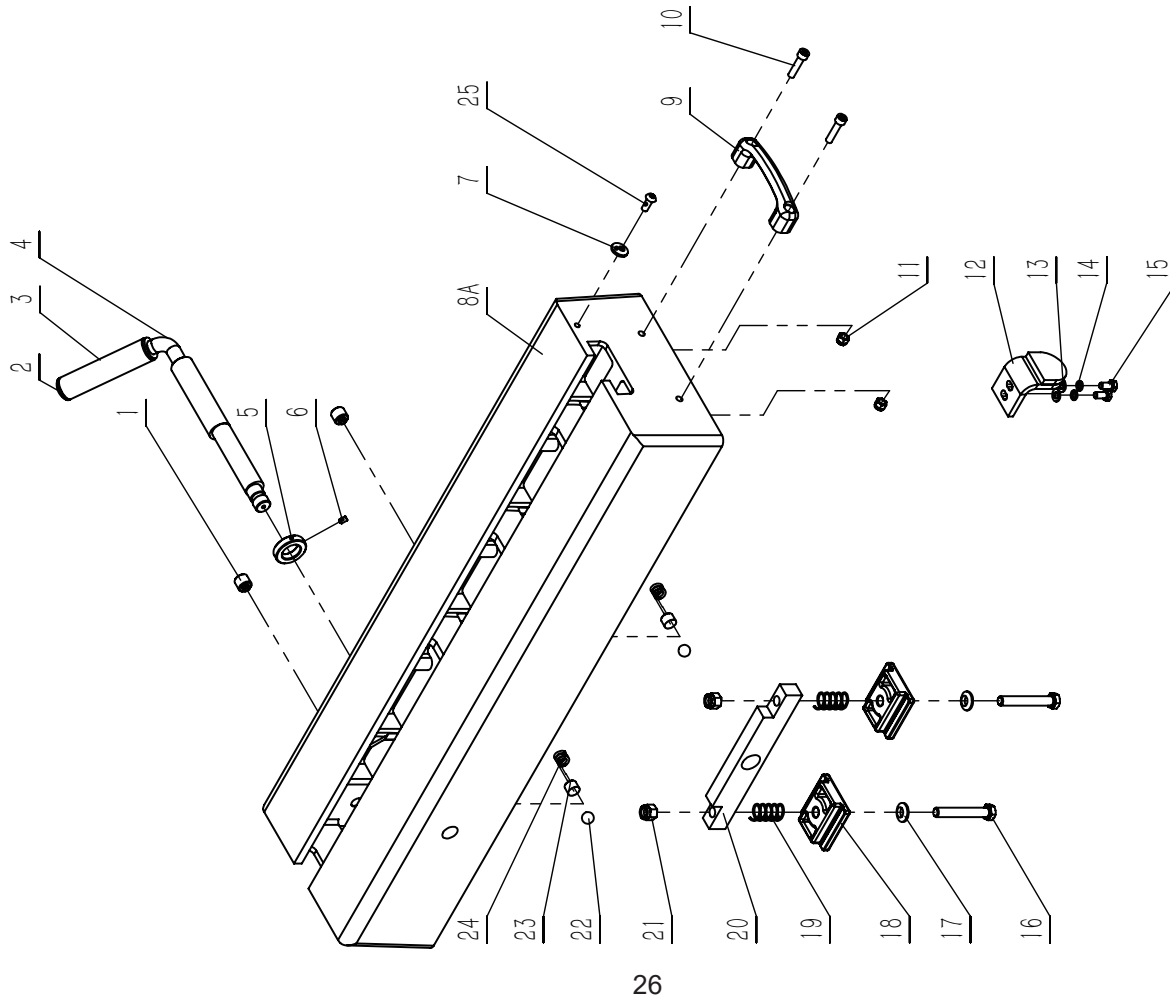
PARTS LIST

HEADSTOCK ASSEMBLY - SHEET B

KEY NO.	DESCRIPTION	PART NO.	QTY.	KEY NO.	DESCRIPTION	PART NO.	QTY.
1B	Pointer	P70-3040-1B	1	30B	Hex socket cap screw M12x30	P70-3040-30B	6
2B	Spindle pulley	P70-3040-2B	1	31B	Spring washer 12	P70-3040-31B	6
3B	Flat key (type A)	P70-3040-3B	1	32B	Washer 12	P70-3040-32B	6
4B	Shoulder screw	P70-3040-4B	1	33B	Countersunk head screw M4x16	P70-3040-33B	1
5B	Motor pulley	P70-3040-5B	1	34B	Magnet	P70-3040-34B	3
6B	Hex set screw M8x8	P70-3040-6B	4	35B	Plate	P70-3040-35B	1
7B	Spindle lock nut	P70-3040-7B	1	36B	Small handle	P70-3040-36B	1
8B	Spindle hand wheel	P70-3040-8B	1	37B	Switch box	P70-3040-37B	1
9B	Locking nut	P70-3040-9B	1	38B	Hex screw M5x16	P70-3040-38B	1
10B	Cover	P70-3040-10B	1	39B	Knob	P70-3040-39B	1
11B	Hinge shaft	P70-3040-11B	1	40B	Locating sleeve	P70-3040-40B	1
12B	Countersunk head screw M4x10	P70-3040-12B	4	41B	Hex nut M12	P70-3040-41B	2
13B	Hinge	P70-3040-13B	1	42B	Hex screw M8x30	P70-3040-42B	4
14B	Hex nut M3	P70-3040-14B	2	43B	Spring	P70-3040-43B	1
15B	Mounting plate & RPM reader	P70-3040-15B	1	44B	Locating pin	P70-3040-44B	1
16B	Countersunk head screw M5x8	P70-3040-16B	6	45B	Hinge shaft	P70-3040-45B	1
17B	Countersunk head screw M3x10	P70-3040-17B	2	46B	Hinge	P70-3040-46B	1
18B	Plastic RPM reader disc	P70-3040-18B	1	47B	Motor adjusting plate	P70-3040-47B	1
19B	Self tapping screw ST4D2x13	P70-3040-19B	2	48B	Adjusting cam	P70-3040-48B	1
20B	Set screw M6x25	P70-3040-20B	2	49B	Elastic cylindrical pin	P70-3040-49B	1
21B	Cable clamp	P70-3040-21B	2	50B	Locating shaft	P70-3040-50B	1
22B	Display unit	P70-3040-22B	1	51B	Positioning cam	P70-3040-51B	1
23B	Inverter control box	P70-3040-23B	1	52B	Handle	P70-3040-52B	1
24B	Spindle	P70-3040-24B	1	53B	Sleeve	P70-3040-53B	1
25B	Bearing 6007	P70-3040-25B	4	54B	End cap	P70-3040-54B	1
26B	Face plate 3-3/8" (82mm)	70-934	1	55B	Motor	P70-3040-55B	1
27B	Spur center	70-943	1	56B	Poly-v-belt	70-987	1
28B	Set screw M6x12	P70-3040-28B	2	57B	Speed measuring head	P70-3040-57B	1
29B	Headstock	P70-3040-29B	1	58B	RPM reader	P70-3040-58B	1

SLIDING LATHE BED ASSEMBLY - SHEET C

PARTS DIAGRAM & PARTS LIST

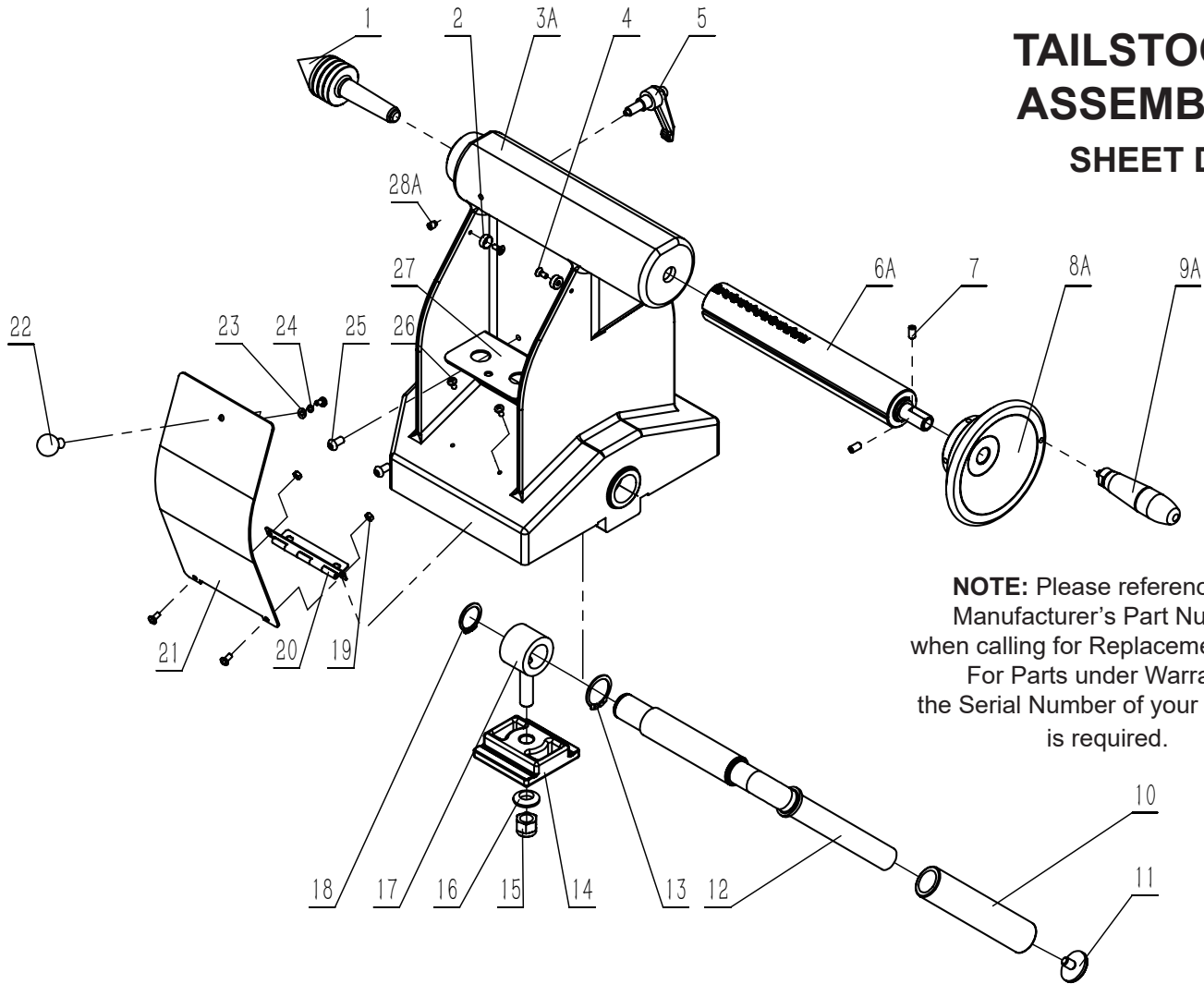


KEY NO.	DESCRIPTION	PART NO.	QTY.
1C	Compression spring screw	P70-3040-1C	2
2C	End cap	P70-3040-2C	1
3C	Sleeve	P70-3040-3C	1
4C	Handle	P70-3040-4C	1
5C	Locking sleeve	P70-3040-5C	1
6C	Set screw M6x10	P70-3040-6C	1
7C	Eccentric washer	P70-3040-7C	1
8CA	Upper sliding bed	P70-3040-8CA	1
9C	Handle	P70-3040-9C	1
10C	Hex socket cap screw M8x35	P70-3040-10C	2
11C	Hexagon lock nut M8	P70-3040-11C	2
12C	Junction plate	P70-3040-12C	1
13C	Washer 8	P70-3040-13C	2
14C	Spring washer 8	P70-3040-14C	2
15C	Hex bolt (full thread) M8x16	P70-3040-15C	2
16C	Hex bolt (full thread) M12x80	P70-3040-16C	2
17C	Washer 12	P70-3040-17C	2
18C	Clamping plate	P70-3040-18C	2
19C	Spring	P70-3040-19C	2
20C	Locking block	P70-3040-20C	1
21C	Hexagon lock nut M12	P70-3040-21C	2
22C	Steel ball (15mm)	P70-3040-22C	2
23C	Copper billet	P70-3040-23C	2
24C	Spring	P70-3040-24C	2
25C	Screw M8x12	P70-3040-25C	1

NOTE: Please reference the Manufacturer's Part Number when calling for Replacement Parts.
For Parts under Warranty, the Serial Number of your machine is required.

PARTS DIAGRAM & PARTS LIST

TAILSTOCK ASSEMBLY SHEET D

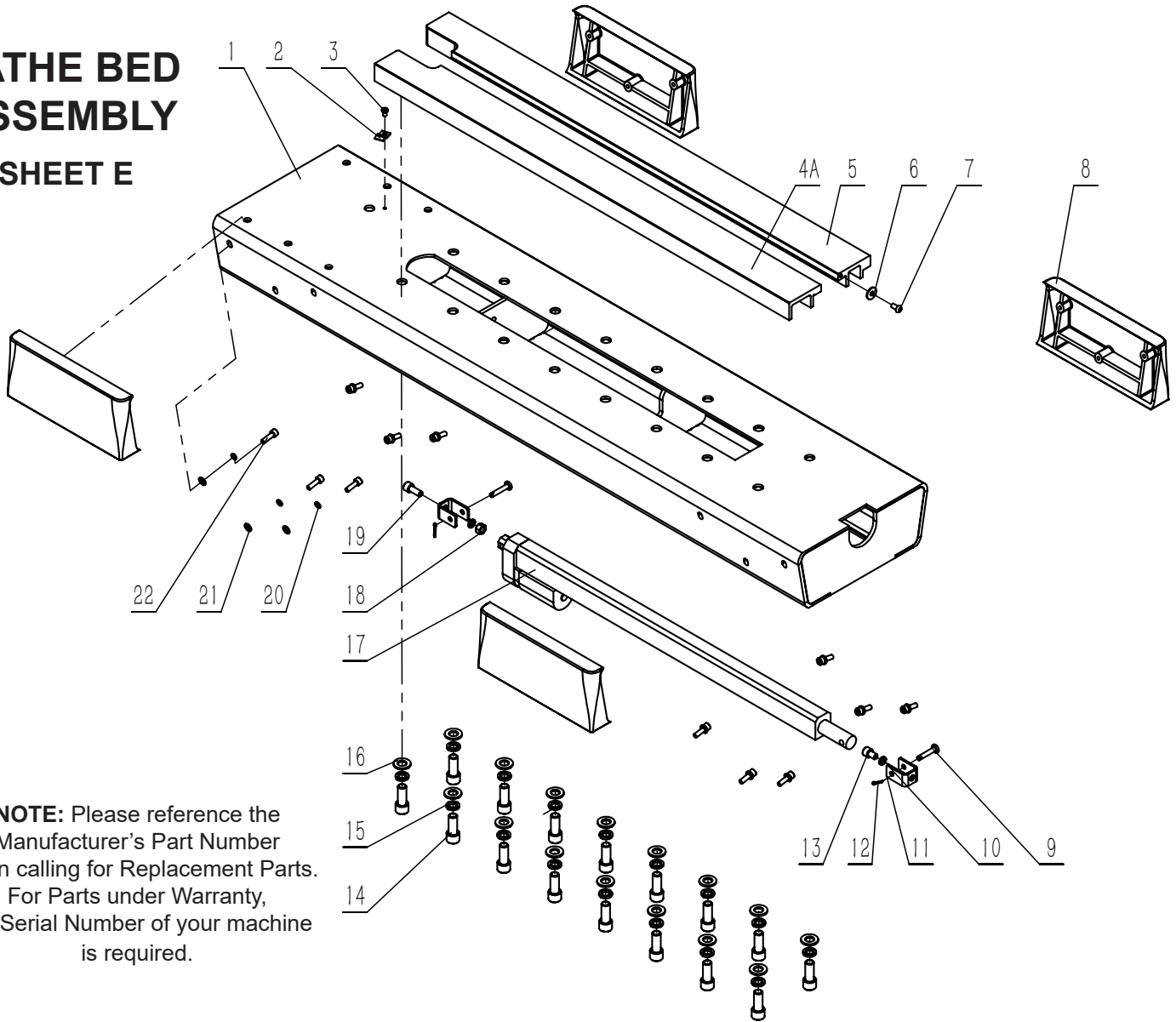


NOTE: Please reference the Manufacturer's Part Number when calling for Replacement Parts. For Parts under Warranty, the Serial Number of your machine is required.

KEY NO.	DESCRIPTION	PART NO.	QTY.	KEY NO.	DESCRIPTION	PART NO.	QTY.
1D	Live center	70-942	1	15D	Hexagon lock nut M12	P70-3040-15D	1
2D	Magnet	P70-3040-2D	2	16D	Washer	P70-3040-16D	1
3DA	Tailstock	P70-3040-3DA	1	17D	Drawbar	P70-3040-17D	1
4D	Countersunk screw M4x10	P70-3040-4D	2	18D	Retaining ring	P70-3040-18D	1
5D	Handle	P70-3040-5D	1	19D	Hex nut M4	P70-3040-19D	2
6DA	Shaft assembly (Quill)	P70-3040-6DA	1	20D	Hinge	P70-3040-20D	1
7D	Hex set screw M6x12	P70-3040-7D	2	21D	Cover plate	P70-3040-21D	1
8DA	Hand wheel	P70-3040-8DA	1	22D	Small handle	P70-3040-22D	1
9DA	Handle assembly	P70-3040-9DA	1	23D	Washer	P70-3040-23D	1
10D	Sleeve	P70-3040-10D	1	24D	Spring washer	P70-3040-24D	1
11D	End cap	P70-3040-11D	1	25D	Hex screw M6x12	P70-3040-25D	2
12D	Handle	P70-3040-12D	1	26D	Pan head screw M4x8	P70-3040-26D	5
13D	Retaining ring	P70-3040-13D	1	27D	Tool holder	P70-3040-27D	1
14D	Clamping plate	P70-3040-14D	1	28DA	Hex set screw M8x8	P70-3040-28DA	1

PARTS DIAGRAM & PARTS LIST

LATHE BED ASSEMBLY SHEET E

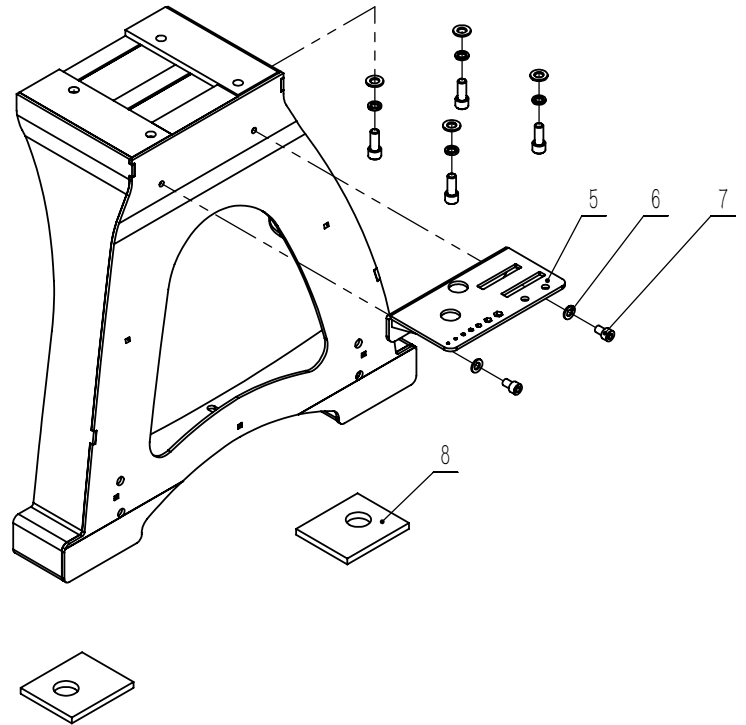
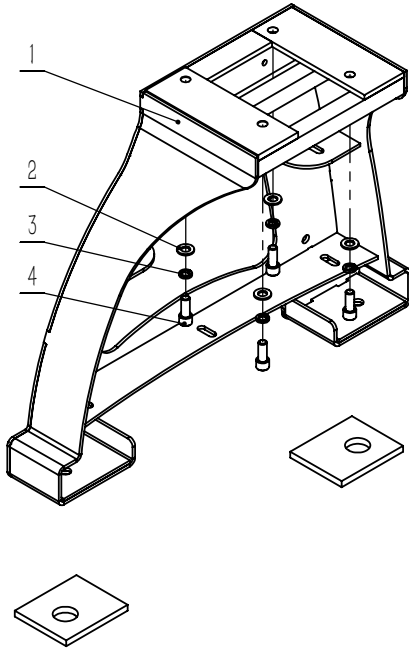


NOTE: Please reference the Manufacturer's Part Number when calling for Replacement Parts. For Parts under Warranty, the Serial Number of your machine is required.

KEY NO.	DESCRIPTION	PART NO.	QTY.	KEY NO.	DESCRIPTION	PART NO.	QTY.
1E	Lower bed	P70-3040-1E	1	12E	Cotter pin	P70-3040-12E	2
2E	Cable clamp	P70-3040-2E	1	13E	Hex screw M8x12	P70-3040-13E	1
3E	Pan head screw M5x8	P70-3040-3E	1	14E	Hex screw M12x30	P70-3040-14E	16
4EA	Front rail	P70-3040-4EA	1	15E	Spring washer	P70-3040-15E	16
5E	Rear rail	P70-3040-5E	1	16E	Washer	P70-3040-16E	16
6E	Washer	P70-3040-6E	1	17E	Electric cylinder assembly	P70-3040-17E	1
7E	Hex head screw M6x12	P70-3040-7E	1	18E	Hex nut M8	P70-3040-18E	1
8E	Trim cover	P70-3040-8E	4	19E	Hex screw M8x20	P70-3040-19E	1
9E	Clevis pin	P70-3040-9E	2	20E	Spring washer	P70-3040-20E	12
10E	Spring washer	P70-3040-10E	2	21E	Washer	P70-3040-21E	12
11E	Fixed plate	P70-3040-11E	2	22E	Hex screw M6x20	P70-3040-22E	12

PARTS DIAGRAM & PARTS LIST

LATHE BASE ASSEMBLY SHEET F



NOTE: Please reference the Manufacturer's Part Number when calling for Replacement Parts. For Parts under Warranty, the Serial Number of your machine is required.

KEY NO.	DESCRIPTION	PART NO.	QTY.
1F	Leg	P70-3040-1F	2
2F	Washer 12	P70-3040-2F	8
3F	Spring washer	P70-3040-3F	8
4F	Hex cap screw M12x35	P70-3040-4F	8
5F	Tool holder	P70-3040-5F	1
6F	Washer	P70-3040-6F	2
7F	Hex cap screw M10x16	P70-3040-7F	2
8F	Rubber pads	P70-3040-8F	4

TOOLS NOT SHOWN OR LISTED ON PREVIOUS PAGES

Hex Wrench - 2.5mm	P-HEX2.5	Wrench - 13mm/16mm	P-WRENCH 13/16mm
Hex Wrench - 3mm	P-HEX3	Wrench - 17mm/19mm	P-WRENCH 17/19mm
Hex Wrench - 4mm	P-HEX4	Wrench - 38mm/46mm	P-WRENCH 38/46mm
Hex Wrench - 5mm	P-HEX5		
Hex Wrench - 6mm	P-HEX6	Knockout Bar x-long	P70-3040-KOBAR
Hex Wrench - 8mm	P-HEX8	Knockout bar small for spur center point	P70-100-104A
Hex Wrench - 10mm	P-HEX10		