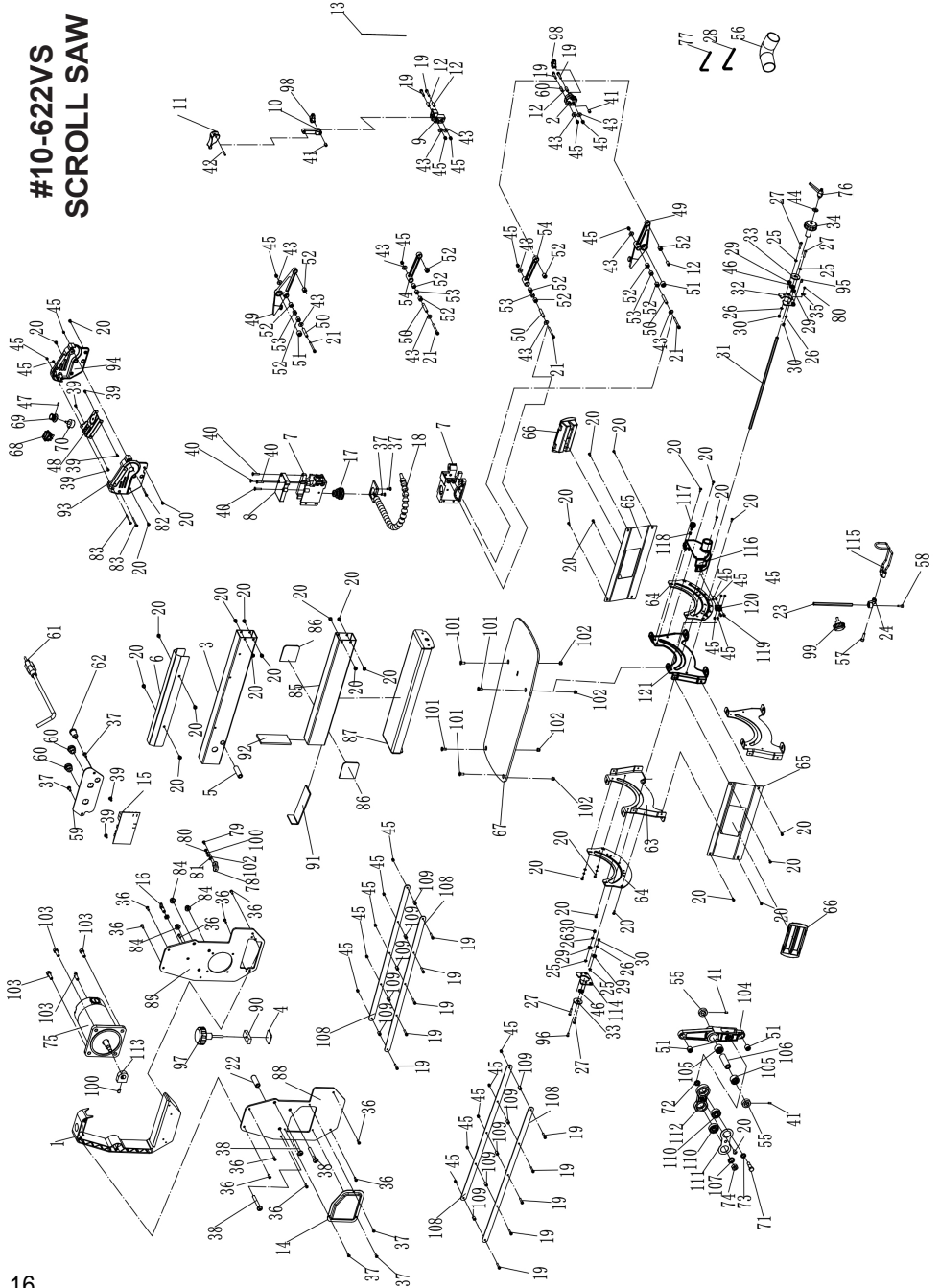


PARTS DIAGRAM

#10-622VS SCROLL SAW



PARTS LIST - #10-622VS

NOTE: Please reference the Key Number when calling for Replacement Parts.

For Parts under Warranty, the Serial Number of your machine is required.

KEY	DESCRIPTION	QTY
1	Housing guard board	1
2	Lower adaptor	1
3	Upper supporting tube	1
4	Upper supporting pad	1
5	Upper supporting spindle	1
6	Upper supporting backplate	1
7	Arm base	2
8	Pull rod slide block	1
9	Adaptor support	1
10	Upper adaptor	1
11	Blade tension handle	1
12	Bearing bushing 2	4
13	Blade	1
14	Left housing insert	1
15	Motor control board PCB R3	1
16	Pull ring pin M8	1
17	Bellows	1
18	Blast pipe	1
19	Hex socket screw M4x20	14
20	Hex socket screw M5x8	33
21	Hex socket screw M4x40	4
22	Bracket Reinforcement Tube	1
23	Adjusting rod	1
24	Drop foot base	1
25	Bearing spacer bush	4
26	Bearing pad	4
27	Dome screw-M6x25	4
28	Hex socket wrench S4	1
29	Bearing 606	4
30	Hex nut M6	4
31	Lock rod (M8)	1
32	Bearing pressure plate rivets	1
33	Bearing pressure plate	2
34	Table lock knob	1
35	Pointer	1
36	Phillips screw ST3.9*12	10
37	Hex socket screw M4x10	7
38	Hex screw-M8x65	3
39	Phillips screw ST3.5x6-F	6
40	Hex socket screw M4x20	4

KEY	DESCRIPTION	QTY
41	Hex socket screw M6x8	4
42	Spring cloumn pin-3x18	1
43	Big washer D4	11
44	Big washer D8	1
45	Lock hex nut M4	25
46	Steering gear M1.5Z14	2
47	Hex socket screw M4x8	1
48	Switch box cover	1
49	Big arm	2
50	Bearing bush 3	4
51	Needle bearing HK0810	4
52	Needle bearing HK0609	12
53	Bearing pad	4
54	Small arm	2
55	Swing axle sleeve	2
56	Dust hose fitting	1
57	Hex socket screw M5x20	1
58	Hex socket screw M4x12	1
59	Right housing insert	1
60	Strain relief 6P-4	2
61	Power cord	1
62	Overload protector base	1
63	Panel	2
64	Rotation plate	2
65	Side plate	2
66	Tool box	2
67	Work table	1
68	Switch	1
69	Variable speed knob	1
70	Potentiometer	1
71	Fixed bolt	1
72	Washer	1
73	Spring washer D10	1
74	Hex nut M8 left	1
75	DC Motor	1
76	Lock handle assy	1
77	Hex socket wrench S3	1
78	Ground plate	1
79	Phillips screw M4x10	1
80	Phillips screw M4x6	2

