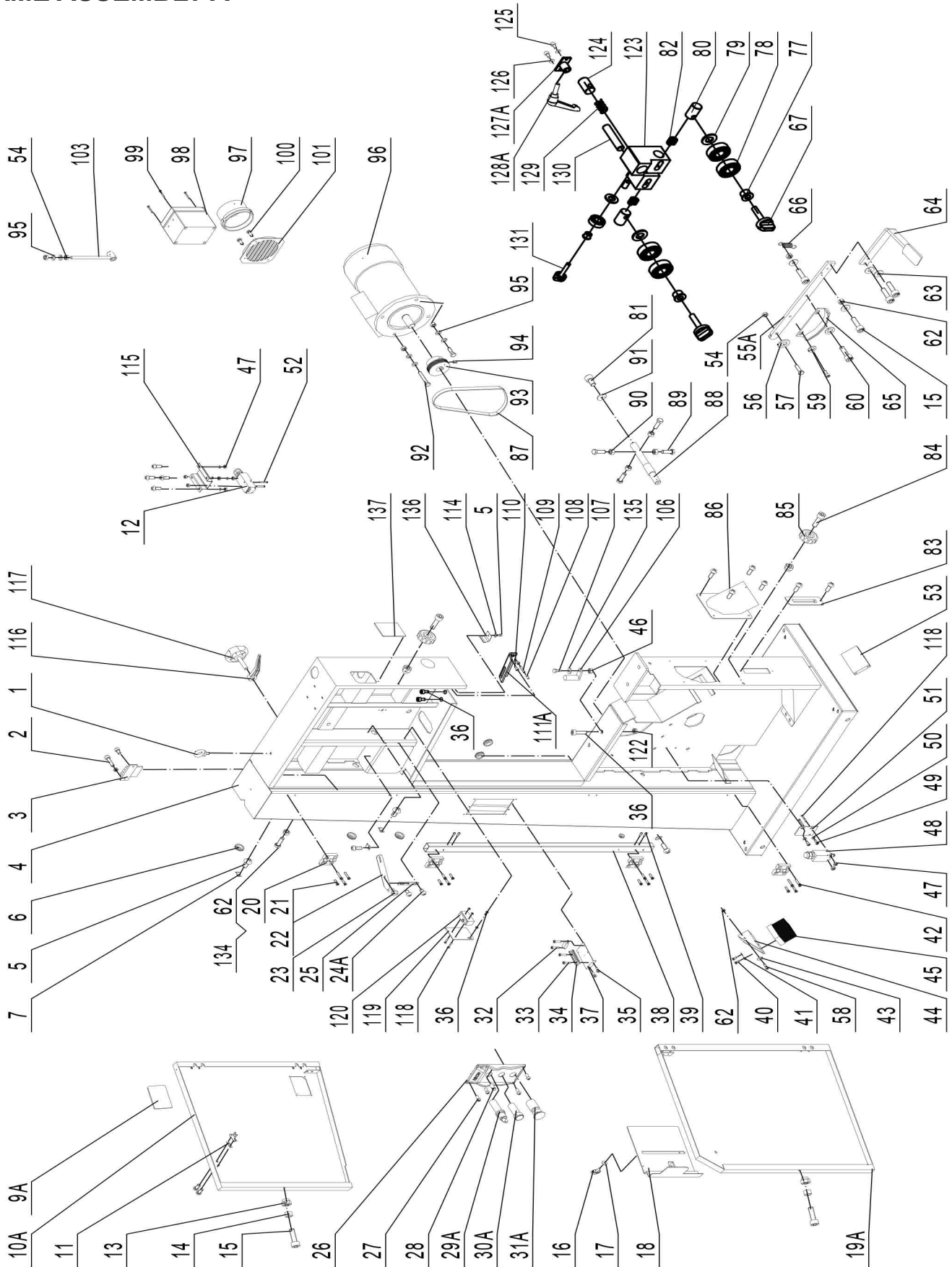


PARTS DIAGRAM

FRAME ASSEMBLY A



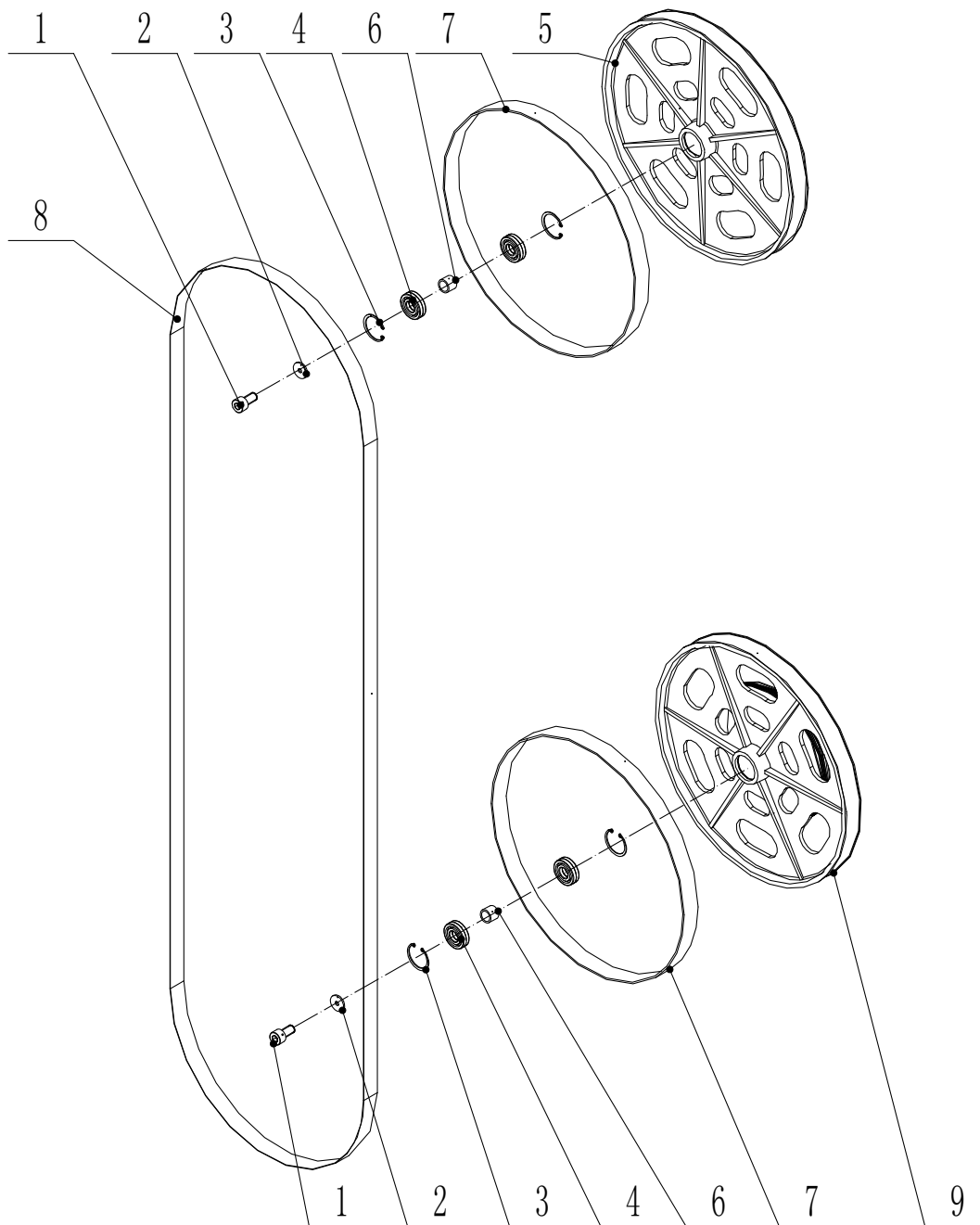
PARTS LIST

FRAME ASSEMBLY A

KEY NO.	DESCRIPTION	QTY	MFG. PART NO.	KEY NO.	DESCRIPTION	QTY	MFG. PART NO.
1A	Support Ring	1	P10-347-1A	67A	Clamp handle	2	P10-347-67A
2A	Cross recess pan hd screw M5X10	2	P10-347-2A	68A	Self-locking nut	1	P10-347-68A
3A	Tool holder	1	P10-347-3A	69A	Gear	1	P10-347-69A
4A	Frame	1	P10-347-4A	70A	Belleville spring	1	P10-347-70A
5A	Cross recess pan hd screw M4X10	13	P10-347-5A	71A	Flat washer	2	P10-347-71A
6A	Protecting bush	3	P10-347-6A	72A	Spacer bush	1	P10-347-72A
7A	Pressing plate	3	P10-347-7A	73A	Set screw M6X12	2	P10-347-73A
8A	Rivet	8	P10-347-8A	74A	Big washer	3	P10-347-74A
9A	Clear Window	2	P10-347M3-9A	75A	Hex socket cap screw M6X20	3	P10-347-75A
10A	Upper door	1	P10-347M3-10A	76A	Hand wheel	1	P10-347-76A
11A	Thread plate	1	P10-347-11A	77A	Bearing bush	3	P10-347-77A
12A	Microswitch	1	P10-347-12A	78A	Bearing	5	P10-347-78A
13A	Locknut	4	P10-347-13A	79A	Washer	3	P10-347-79A
14A	Bushing	2	P10-347-14A	80A	Guide shaft	2	P10-347-80A
15A	Hex socket cap screw M6X20	2	P10-347-15A	81A	Hex socket cap screw M8X12	1	P10-347-81A
16A	Wing nut	1	P10-347-16A	82A	Guide seat	1	P10-347-82A
17A	Big washer	1	P10-347-17A	83A	Side cover	1	P10-347-83A
18A	Protective cover	1	P10-347-18A	84A	Hex socket cap screw M6X25	2	P10-347-84A
19A	Lower door	1	P10-347M3-19A	85A	Handle	2	P10-347-85A
20A	Plastic hinge	4	P10-347-20A	86A	Suction inlet	1	P10-347-86A
21A	Hex socket countersunk hd M6X20	12	P10-347-21A	87A	Micro V-belt	1	P10-347-87A
22A	Indicator	1	P10-347-22A	88A	Lower guide wheel shaft	1	P10-347-88A
23A	Screw	1	P10-347-23A	89A	Hex bolt M12X40	4	P10-347-89A
24A	Cross recess pan head screw M5X10	2	P10-347M3-24A	90A	Hex nut	4	P10-347-90A
25A	Batter board	1	P10-347-25A	91A	Washer	1	P10-347-91A
26A	Switch box	1	P10-347-26A	92A	Hex bolt M10X60	1	P10-347-92A
27A	Cross recess pan head screw M4X12	4	P10-347-27A	93A	Motor pulley	1	P10-347-93A
28A	Power light	1	P10-347-28A	94A	Set screw M8X12	1	P10-347-94A
29A	Key switch	1	P10-347M3-29A	95A	Flat washer	4	P10-347-95A
30A	Start button	1	P10-347M3-30A	96A	Motor 4HP, 220V	1	P10-347-96A
31A	Stop button	1	P10-347M3-31A	97A	Suction port	1	P10-347-97A
32A	Cross recess pan head screw M3X12	2	P10-347-32A	98A	Relay	1	P10-347-98A
33A	Cross recess pan head screw M3X5	2	P10-347-33A	99A	Cross recess pan hd M4X16	4	P10-347-99A
34A	Wire holder	1	P10-347-34A	100A	Cross recessed pan hd tapping	2	P10-347-100A
35A	Screw M4X10	2	P10-347-35A	101A	Suction grille	1	P10-347-101A
36A	Hex socket cap screw M5X10	1	P10-347-36A	102A	Clamp handle	1	P10-347-102A
37A	Wiring board	1	P10-347-37A	103A	Pull rod	1	P10-347-103A
38A	Joint pin	1	P10-347-38A	104A	Hex bolt M6X16	2	P10-347-104A
39A	Screw M6X12	4	P10-347-39A	105A	Guide block	1	P10-347-105A
40A	Tapping screw	2	P10-347-40A	106A	Heel block	1	P10-347-106A
41A	Flat washer	6	P10-347-41A	107A	Stud shaft	1	P10-347-107A
42A	Hex socket countersunk hd M6X30	4	P10-347-42A	108A	Plastic pipe	1	P10-347-108A
43A	Big washer	3	P10-347-43A	109A	Set screw	1	P10-347-109A
44A	Sawdust brush holder	1	P10-347-44A	110A	Hex socket cap screw M6X10	1	P10-347-110A
45A	Brush	1	P10-347-45A	111A	Adjustment panel	1	P10-347M3-111A
46A	Hex nut M8	2	P10-347-46A	112A	Spring	1	P10-347-112A
47A	Hex nut M4	8	P10-347-47A	113A	Pressing plate	1	P10-347-113A
48A	Microswitch	1	P10-347-48A	114A	Flat washer	4	P10-347-114A
49A	Hex socket cap screw M6X12	2	P10-347-49A	115A	Switch base	1	P10-347-115A
50A	Flat washer	2	P10-347-50A	116A	Handle locking	1	P10-347-116A
51A	Switch plate	1	P10-347-51A	117A	Adjust lever	1	P10-347-117A
52A	Cross recess pan head screw M4X30	2	P10-347-52A	118A	Cross recessed countersunk M4X30	4	P10-347-118A
53A	Dust collection plate	1	P10-347-53A	119A	Switch plate	1	P10-347-119A
54A	Hex nut	3	P10-347-54A	120A	Microswitch	1	P10-347-120A
55A	Connecting rod	1	P10-347M3-55A	121A	Hex socket cap screw M5X10	1	P10-347-121A
56A	Flat washer	1	P10-347-56A	122A	Nut	1	P10-347-122A
57A	Hex bolt M10X35	1	P10-347-57A	123A	Lower guide	1	P10-347-123A
58A	Hex socket cap screw M6X12	1	P10-347-58A	124A	Rear guide shaft	1	P10-347-124A
59A	Flat washer	2	P10-347-59A	125A	Hex socket cap screw M6X12	2	P10-347-125A
60A	Hex socket cap screw M8X16	2	P10-347-60A	126A	Washer	2	P10-347-126A
61A	Hex socket cap screw M6X20	4	P10-347-61A	127A	Lower guide seat	1	P10-347-127A
62A	Hex nut	2	P10-347-62A	128A	Clamp handle	1	P10-347-128A
63A	Flat washer	4	P10-347-63A	129A	Spring	1	P10-347-129A
64A	Pedal	1	P10-347-64A	130A	Adjusting spindle	1	P10-347-130A
65A	Skate brake	1	P10-347-65A	131A	Clamp handle	1	P10-347-131A
66A	Tension spring	1	P10-347-66A				

PARTS DIAGRAM

WHEEL ASSEMBLY B



PARTS LIST

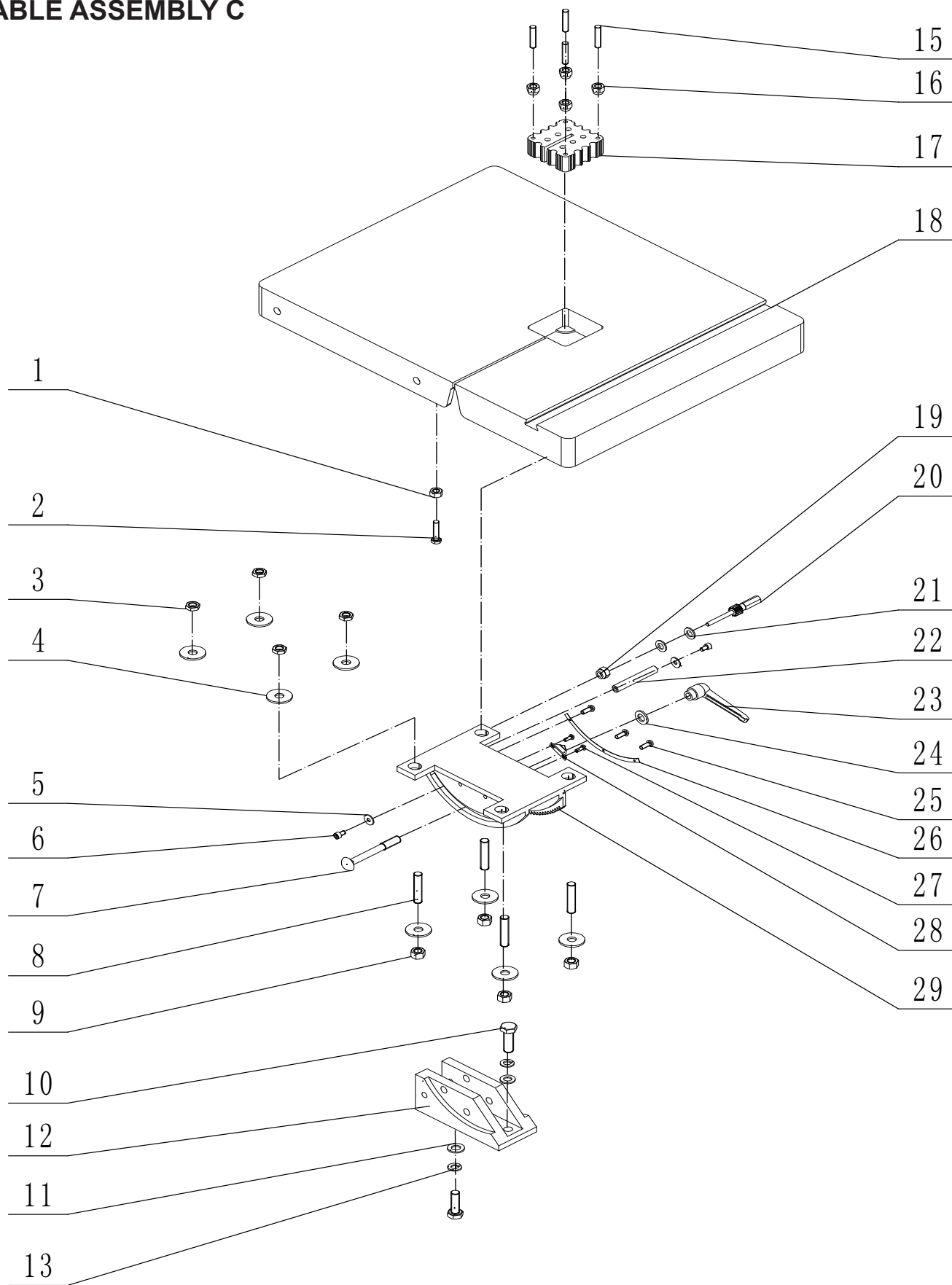
WHEEL ASSEMBLY B

KEY NO.	DESCRIPTION	QTY	MFG. PART NO.
1B	Hex socket cap screw M8X16	2	P10-347-1B
2B	Washer	2	P10-347-2B
3B	Circlip	4	P10-347-3B
4B	Bearing	4	P10-347-4B
5B	Upper wheel	1	P10-347-5B
6B	Spacer bushing	2	P10-347-6B
7B	Rubber tire	2	P10-347-7B
8B	Blade	1	P10-347-8B
9B	Lower wheel	1	P10-347-9B

NOTE: Please reference the Manufacturer's Part Number when calling for Replacement Parts.
For Parts under Warranty, the serial number of your machine is required.

PARTS DIAGRAM

TABLE ASSEMBLY C



PARTS LIST

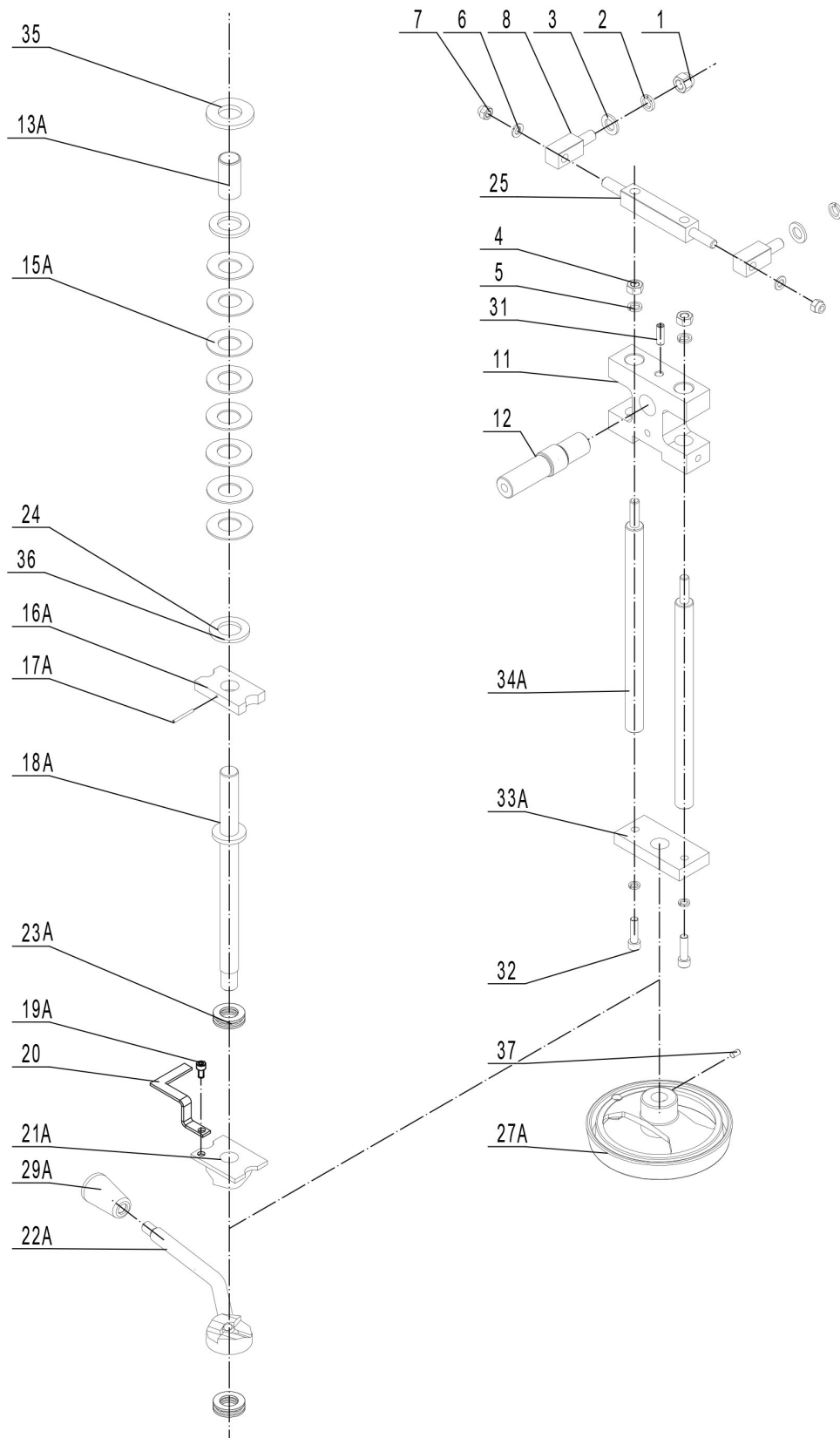
TABLE ASSEMBLY C

KEY NO.	DESCRIPTION	QTY	MFG. PART NO.
1C	Hex nut M8	1	P10-347-1C
2C	Hex bolt M8X30	1	P10-347-2C
3C	Nut	4	P10-347-3C
4C	Washer	8	P10-347-4C
5C	Big washer	2	P10-347-5C
6C	Hex socket cap screw M6X10	2	P10-347-6C
7C	Carriage bolt M12X100	1	P10-347-7C
8C	Set screw M12X60	4	P10-347-8C
9C	Hex nut M12	4	P10-347-9C
10C	Hex bolt M10X30	2	P10-347-10C
11C	Flat washer	4	P10-347-11C
12C	Table trunnion support	1	P10-347-12C
13C	Spring washer	2	P10-347-13C
14C	Hex nut M10	2	P10-347-14C
15C	Set screw M5X30	4	P10-347-15C
16C	Locking nut	4	P10-347-16C
17C	Table insert	1	P10-347-17C
18C	Table	1	P10-347-18C
19C	Self-locking nut	1	P10-347-19C
20C	Gear shaft	1	P10-347-20C
21C	Flat washer	2	P10-347-21C
22C	Guide shaft	1	P10-347-22C
23C	Clamp handle	1	P10-347-23C
24C	Flat washer	1	P10-347-24C
25C	Rivet	3	P10-347-25C
26C	Angle label	1	P10-347-26C
27C	Cross recess pan head screw	2	P10-347-27C
28C	M3X5	1	P10-347-28C
29C	Indicator	1	P10-347-29C
	Table trunnion assembly		

NOTE: Please reference the Manufacturer's Part Number when calling for Replacement Parts.
For Parts under Warranty, the serial number of your machine is required.

PARTS DIAGRAM

BLADE TENSION & TRACKING D



PARTS LIST

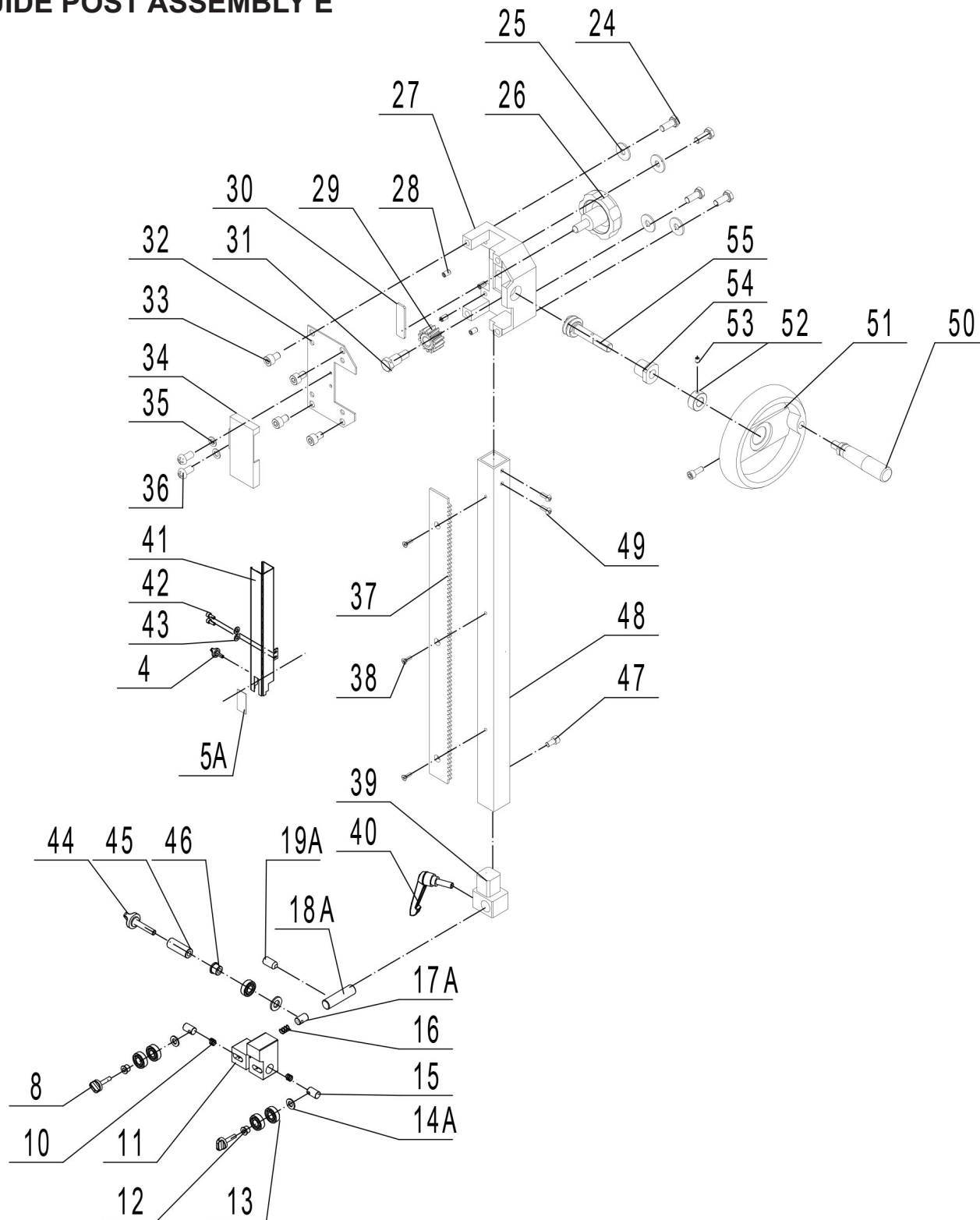
BLADE TENSIONING & TRACKING D

KEY NO.	DESCRIPTION	QTY	MFG. PART NO.
1D	Cap nut	2	P10-347M3-1D
2D	Spring washer	2	P10-347M3-2D
3D	Big washer	2	P10-347M3-3D
4D	Hex nut M10	2	P10-347M3-4D
5D	Spring washer	4	P10-347M3-5D
6D	Flat washer	2	P10-347M3-6D
7D	Locking nut	2	P10-347M3-7D
8D	Bolt	2	P10-347M3-8D
9D	Double-thread screw	1	P10-347M3-9D
11AD	Sliding piece	1	P10-347M3-11AD
12D	Upper wheel shaft	1	P10-347M3-12D
13AD	Tube	1	P10-347M3-13AD
15AD	Belleville spring	8	P10-347M3-15AD
16AD	Thread plate	1	P10-347M3-16AD
17AD	Roll pin	1	P10-347M3-17AD
18AD	Threaded rod	1	P10-347M3-18AD
19AD	Hex socket cap screw M5X10	1	P10-347M3-19AD
20D	Pressing plate	1	P10-347M3-20D
21AD	Upper piece	1	P10-347M3-21AD
22AD	Lower piece	1	P10-347M3-22AD
23AD	Bearing	1	P10-347M3-23AD
27AD	Handle	1	P10-347M3-27AD
29AD	Knob	2	P10-347M3-29AD
31D	Screw M8X20	1	P10-347M3-31D
32D	Hex socket cap screw M10X30	2	P10-347M3-32D
33AD	Support plate	1	P10-347M3-33AD
34AD	Slide bar	2	P10-347M3-34AD
35D	Spacer	1	P10-347M3-35D
36D	Washer	2	P10-347M3-36D
37D	Inner hex socket set screw M6X12	1	P10-347M3-37D

NOTE: Please reference the Manufacturer's Part Number when calling for Replacement Parts.
For Parts under Warranty, the serial number of your machine is required.

PARTS DIAGRAM

GUIDE POST ASSEMBLY E



NOTE: Please reference the Manufacturer's Part Number when calling for Replacement Parts.
For Parts under Warranty, the serial number of your machine is required.

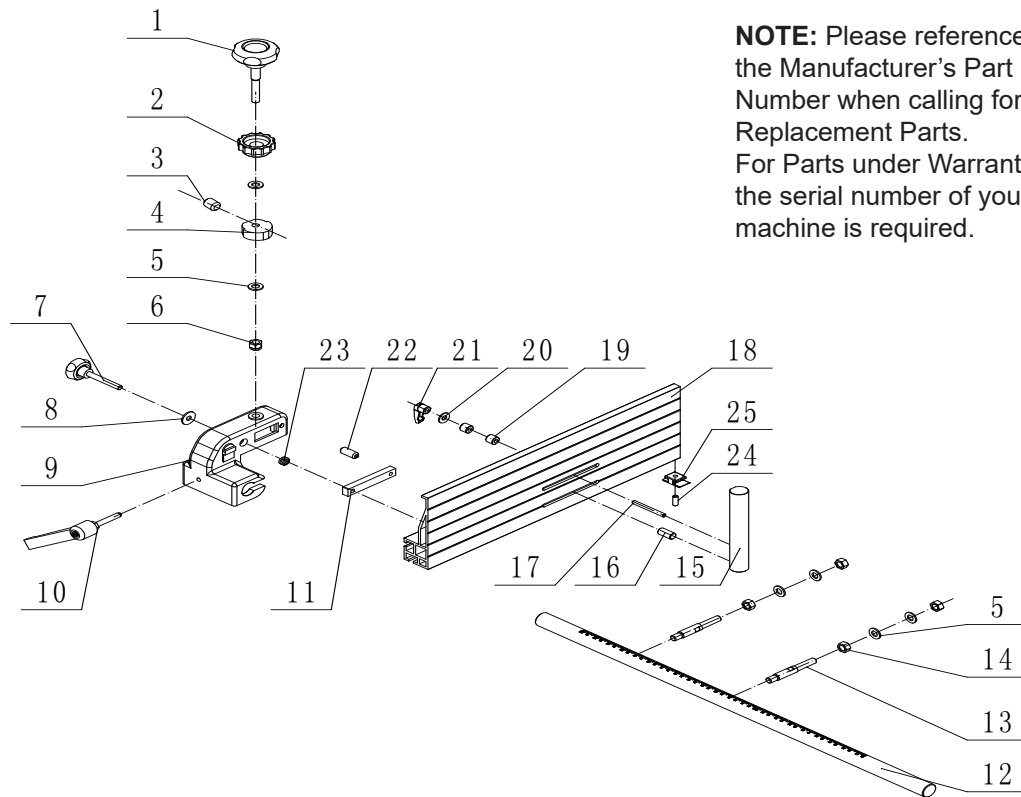
PARTS LIST

GUIDE POST ASSEMBLY E

KEY NO.	DESCRIPTION	QTY	MFG. PART NO.
4E	Clamp handle	1	P10-347-4E
5AE	Window	1	P10-347-5AE
8E	Clamp handle	3	P10-347-8E
10E	Spring	2	P10-347-10E
11AE	Upper guide	1	P10-347-11AE
12E	Bearing bush	1	P10-347-12E
13E	Bearing	5	P10-347-13E
14AE	Flat washer	3	P10-347-14AE
15E	Guide shaft	2	P10-347-15E
16E	Spring	1	P10-347-16E
17AE	Rear guide shaft	1	P10-347-17AE
18AE	Towbar	1	P10-347-18AE
19AE	Set screw M6X12	1	P10-347-19AE
24E	Hex bolt M8X20	4	P10-347-24E
25E	Big washer	4	P10-347-25E
26E	Clamp handle	1	P10-347-26E
27E	Gear seat	1	P10-347-27E
28E	Hex socket set screw M6X10	4	P10-347-28E
29E	Helical gear	1	P10-347-29E
30E	Plate	1	P10-347-30E
31E	Shoulder bolt	1	P10-347-31E
32E	Cover	1	P10-347-32E
33E	Hex socket cap screw M8X16	4	P10-347-33E
34E	Dust cover	1	P10-347-34E
35E	Flat washer	2	P10-347-35E
36E	Cross recess pan head screw	2	P10-347-36E
37E	M4X4	1	P10-347-37E
38E	Rack	3	P10-347-38E
39E	Sunk screw M4X10	1	P10-347-39E
40E	Supporting rod seat	1	P10-347-40E
41E	Adjustable handle	1	P10-347-41E
42E	Blade guard assy	2	P10-347-42E
43E	Hex socket cap screw M5X10	2	P10-347-43E
44E	Flat washer	1	P10-347-44E
45E	Long clamp handle	1	P10-347-45E
46E	Tube	2	P10-347-46E
47E	Lower bearing bush	1	P10-347-47E
48E	Hex socket cap screw M6X30	1	P10-347-48E
49E	Slider bar	3	P10-347-49E
50E	Cross recess pan head screw	1	P10-347-50E
51E	M5X10	1	P10-347-51E
52E	Handle assy	1	P10-347-52E
53E	Big wheel	1	P10-347-53E
54E	Retainer ring	1	P10-347-54E
55E	Fastening screw M5X8	1	P10-347-55E

PARTS DIAGRAM & PARTS LIST

FENCE ASSEMBLY F



NOTE: Please reference the Manufacturer's Part Number when calling for Replacement Parts. For Parts under Warranty, the serial number of your machine is required.

KEY NO.	DESCRIPTION	QTY	MFG. PART NO.
1F	Adjust Handle	1	P10-347-1F
2F	Locking Knob	1	P10-347-2F
3F	Socket head cap screw M8X10	1	P10-347-3F
4F	Cam	1	P10-347-4F
5F	Flat washer	6	P10-347-5F
6F	Nut M10	1	P10-347-6F
7F	Round handle	1	P10-347-7F
8F	Big washer	1	P10-347-8F
9F	Rip fence carrier	1	P10-347-9F
10F	Lock handle	1	P10-347-10F
11F	Sliding block	1	P10-347-11F
12F	Front guide rail	1	P10-347-12F
13F	Connecting rod	2	P10-347-13F
14F	Hex nut M10	4	P10-347-14F
15F	Re-saw bar	1	P10-347-15F
16F	Screw	1	P10-347-16F
17F	Bolt	1	P10-347-17F
18F	Rip fence	1	P10-347-18F
19F	Tube	1	P10-347-19F
20F	Flat washer	1	P10-347-20F
21F	Lock handle	2	P10-347-21F
22F	Roll pin	1	P10-347-22F
23F	Spring	1	P10-347-23F
24F	Set screw	1	P10-347-24F
25F	Nylon plate	1	P10-347-25F