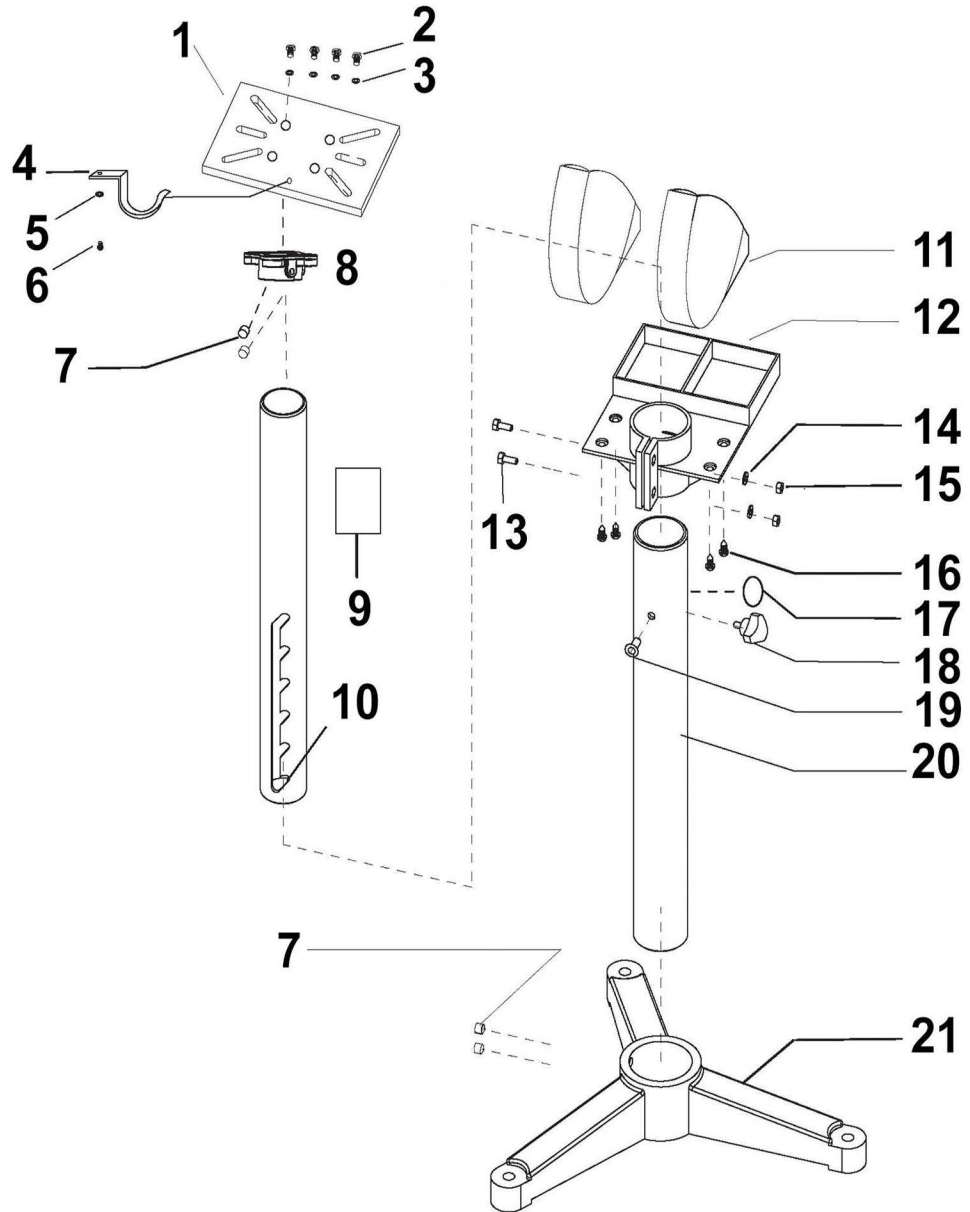


## BENCH GRINDER STAND PARTS LIST

| KEY NO. | DESCRIPTION                       | QTY. |
|---------|-----------------------------------|------|
| 1       | Bench Grinder Support Plate       | 1    |
| 2       | Hex Head Bolt M8 x 20mm           | 4    |
| 3       | Toothed Star Lock Washer D8       | 4    |
| 4       | Hook                              | 1    |
| 5       | Flat Washer D5                    | 1    |
| 6       | Pan Head Screw M5 x 8mm           | 1    |
| 7       | Hex Head Set Screw M10 x 10mm     | 4    |
| 8       | Support Plate Connector           | 1    |
| 9       | Adjustable Height Label           | 1    |
| 10      | Moving Support Pole               | 1    |
| 11      | Wheel Storage Holder              | 2    |
| 12      | Accessory Storage Tray            | 1    |
| 13      | Hex Head Bolt M6 x 20mm           | 2    |
| 14      | Flat Washer D6                    | 2    |
| 15      | Hex Nut M6                        | 2    |
| 16      | Pan Head Tapping Screw ST6 x 18mm | 4    |
| 17      | Tension Label                     | 1    |
| 18      | Tension Handle                    | 1    |
| 19      | Pan Head Screw M8 x 20mm          | 1    |
| 20      | Fixed Pole                        | 1    |
| 21      | Base                              | 1    |
| 22      | 5mm Hex Wrench (Not Shown)        | 1    |



### California Prop 65 Warning

WARNING: This product contains chemicals known to the State of California to cause cancer and birth defects or other reproductive harm.

## BENCH GRINDER STAND ASSEMBLY DIAGRAM

